



Project Name:

Qty: Type:

Product Number:

FEATURES

- UL676 for pool / spa use
- RGB or 3000K / 5000K
- Installs into 1.5" threaded wall fitting
- Remote driver for longer lifespan
- Quick Connect cable for easy service

QUICK GLANCE

MOUNTING OPTIONS

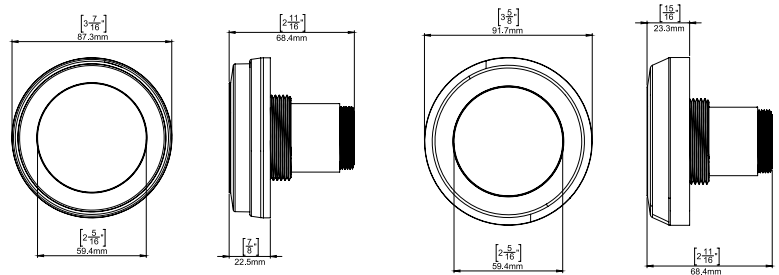


1.5" Fitting
PVC Conduit

SPECIFICATIONS

Lumens*:	CCT:		Voltage	Electrical	Lifespan	Finish	Warranty	Certification
640 Lm	Standard: RGB	WW: 3000K CW: 5000K	Low Voltage: 24V DC Remote Driver: 120-277V AC Input 24V DC Output	8 W (RGB) 8 W (WW/CW)	Standard: L70 > 100,000 hr. @ 25° C	Standard: Black, UV resistant flange.	Standard: 3 Year limited warranty.	UL676 listed for pool and spa application - IP68

DIMENSIONS



ORDERING GUIDE

ORDERING EXAMPLE:
64-EGTMX-V2-80

1: SERIES

64-EGL

SERIES

64-EGTMX-V2
TREO Series - LED
nichless pool
light V2

2: OUTPUT

COLOR/CCT

BLANK
RGB - 4-Wire

WW
3000K - 2-Wire

CW
5000K - 2-Wire

3: CABLE LENGTH

CABLE LENGTH

01
No cable

80
80' cable

150
150' cable

REMOTE DRIVERS (CONTROLLER & TRANSFORMER)

SINGLE COLOR REMOTE DRIVER

64-PCR-2T-65
2 Wire - 65W Driver - 24VDC

64-PCR-3T-120
2 Wire - 120W Driver - 24VDC

64-PCR-3T-500
2 Wire - 500W Driver - 24VDC

RGB REMOTE DRIVER

64-PCR-1Z-65
Remote control (included) - 65W
Driver - 24VDC

64-PCR-1ZW-65
Remote control / PAL Lighting APP
controlled - 65W - 24VDC

64-PCR-2ZW-65
Remote control / PAL Lighting APP
controlled - 65W - 24VDC - 2 Zones

64-PCR-3DW-120
Remote control / PAL Lighting APP
controlled - 120W - 24VDC - 2 Zones

64-PCR-3DW-500
Remote control / PAL Lighting APP
controlled - 500W - 24VDC - 2 Zones

DMX REMOTE DRIVER

64-PCR-2DMX-65
DMX - 65W Driver - 24VDC - 2
Zones

64-PCR-3DMX-120
DMX - 120W Driver - 24VDC - 2
Zones

64-PCR-3DMX-500
DMX - 500W Driver - 24VDC - 2
Zones

64-PCR-3DMX-500-8Z
DMX - 500W Driver - 24VDC - 8
Zones

COMPONENT OVERVIEW



64-EGTMX-V2
(Side View)



Quick Connect
cable



Remote Driver
(Wall mounted)



TAA
COMPLIANT

*Calculated lumens

Specification details may change without prior notice.
V25.02

Copyright 2025 © PAL Lighting LLC. | 4830 Timber Creek Dr. Houston, TX 77017
(713) 946-4343 | pallighting.com



TREO MAX PLUS SERIES

LED Nichless 1.5" fitting pool light - UL676

Project Name:

Qty: Type:

Product Number:

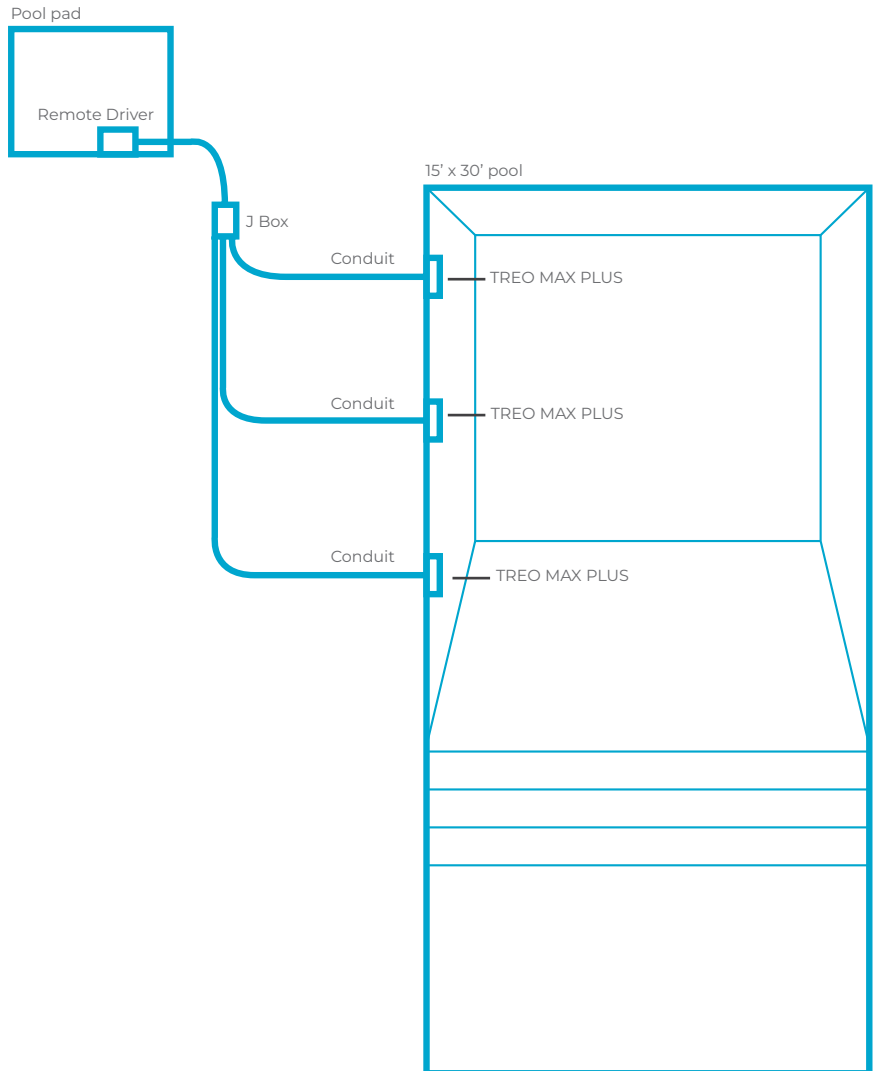
BOM EXAMPLE

Inground pool with 3 nichless pool lights.

Example BOM

Qty.	Product Number
3	64-EGTMX-V2-80
1	64-PCR-IZ-65*

*Remote driver will be based on controls functions needed and total wattage of lights connected to the remote driver. (8W + 8W + 8W < 65W)



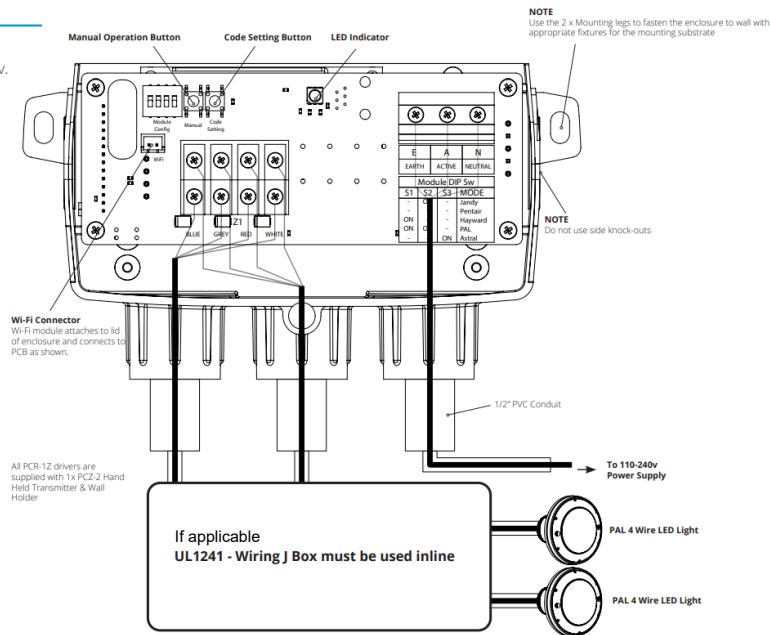
Project Name:

Qty: Type:

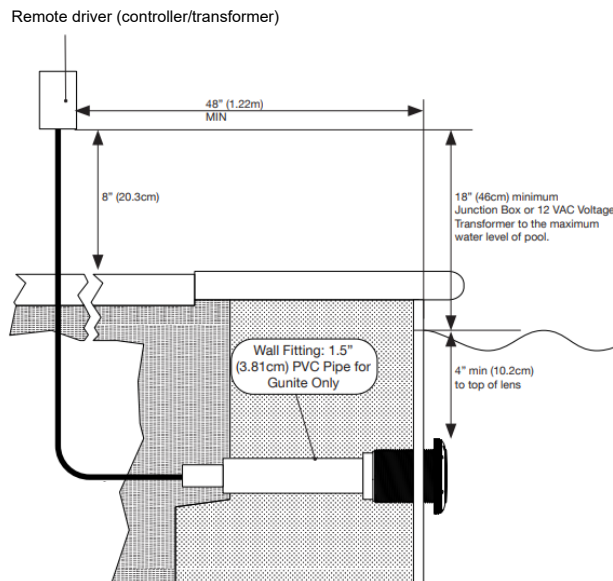
Product Number:

WIRING OVERVIEW

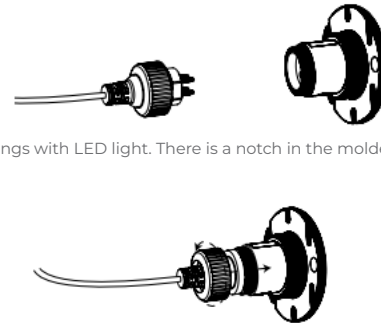
Individual driver boards may vary - please reference driver installation guides on www.pallighting.com



INSTALLATION OVERVIEW



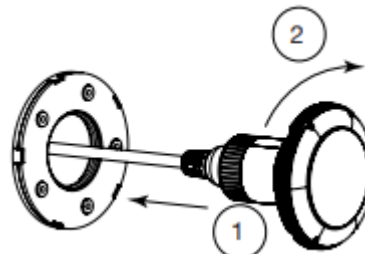
POWER CABLE INSTALLATION



Line up prongs with LED light. There is a notch in the molded form to easily line up.

Secure connection firmly by screwing the quick connector in place. The finished connection should be air/water tight to reduce all risk of water interference.

INSTALLATION TO FITTING



Push cable and light into the 1.5" conduit fitting, secure by turning clockwise by hand.