

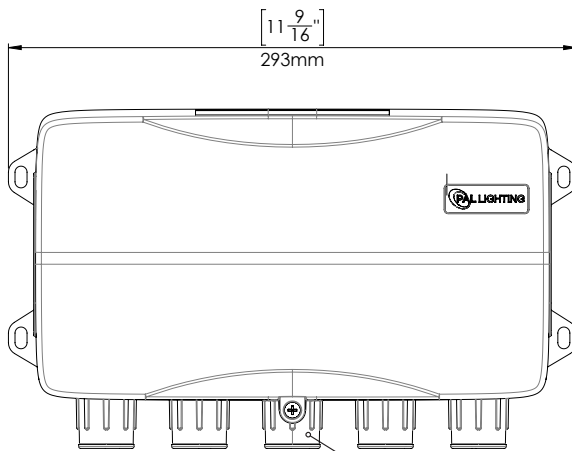
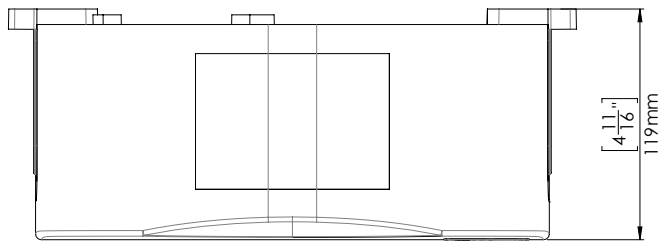


LIGHTING

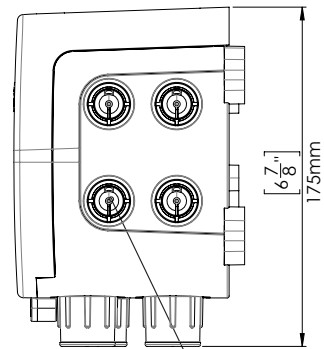
TOUCH 5

INSTRUCTIONS

DIMENSIONS



10 x conduit holes.
Remove cap to utilise conduit hole.
Leave unused conduits capped.
Centre front hole to be used for
power cable.



13/16" / 21.0mm Knockout to
connect power supply (4 available
on each side of enclosure)

Use drill to open knockouts.

Knockout Instructions

It is recommended that the cover is fitted and the cover screws tight when the knockouts are being removed.

When removing the knock outs place a flat blade screwdriver with a 3/16" (4mm) blade as shown and a light hit with a hammer to the head of the screw driver will allow the Knockout to be removed.

Alternatively drill location points are located in the centre of each Knock out to allow the use of a hole saw to remove the knockouts.

INSTALLATION & MAINTENANCE INSTRUCTIONS ON THE PAL TOUCH 5 CLASS 2 OUTDOOR DRIVER/RECEIVER FOR 12V D/C PAL 4 WIRE LED LIGHTS

FEATURES

- Easy to Install
- Approved to UL1563 & CSA C22.2 No.218-1-13 Pending
- Remote Control Operation only on the PCR-5CU from PCT-5 Transmitter
- UL Listed Class 2 Power Supply
- Optional Wi-Fi Control from Apple iOS Devices or Android Devices
- Color Touch Technology,

IMPORTANT INFORMATION

This PAL TOUCH 5 Class 2 power supply is specifically designed to supply 24V DC to power the PAL 4 Wire UL Listed LED Pool lights.

The PAL TOUCH 5 must be installed in accordance with the National Electrical Code by a Certified Electrician or Qualified Pool Technician.

NOTE: No bonding is required from this Class 2 power supply to the UL Listed PAL Pool Light fixtures as they are made of an all plastic construction and comply with NEC article 680 requirements.

INSTALLATION INSTRUCTIONS FOR PAL TOUCH 5 RGB OUTDOOR DRIVER

Step 1. The PAL TOUCH 5 Class 2 Power Supply is a Weatherproof construction (IP65) and should be mounted on a flat surface using the mounting legs on the enclosure with appropriate fixtures for the mounting substrate and in a suitable position to suit the intended location of the PAL 4 Wire LED Pool Lights and installed to comply with all the requirements of the National Electrical Code (NEC) and all relevant local codes and ordinances.

NOTE: The Driver Enclosure must be located a minimum distance of 5 feet measured horizontally from the inside wall of the pool and not less than 1 foot above the maximum pool water level measured to the top of the Driver Enclosure.

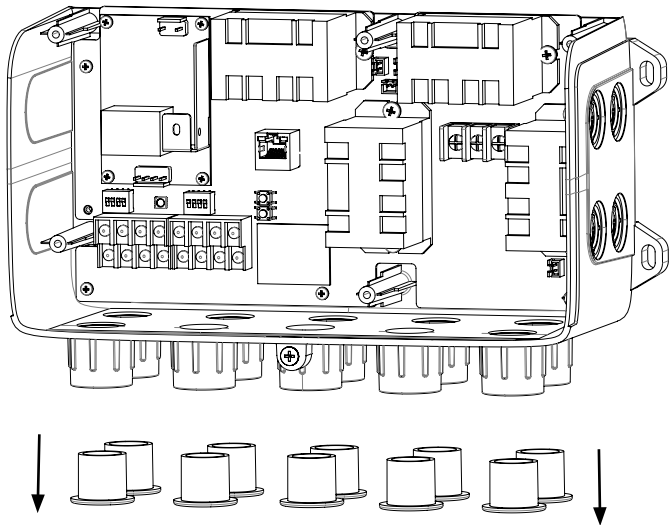
NOTE: The enclosure must be mounted using the mounting legs on the enclosure with the screw set supplied. If the enclosure is to be mounted on a concrete or block wall, *mark out the mounting hole locations and drill 3/16" holes using a masonry drill then fit the Star Plugs supplied into the holes and fix using the stainless steel screws supplied??*

Step 2. Using the right-front entry on the bottom of the PAL TOUCH 5 (as shown) connect the 100-120V power supply to NEC code requirements.

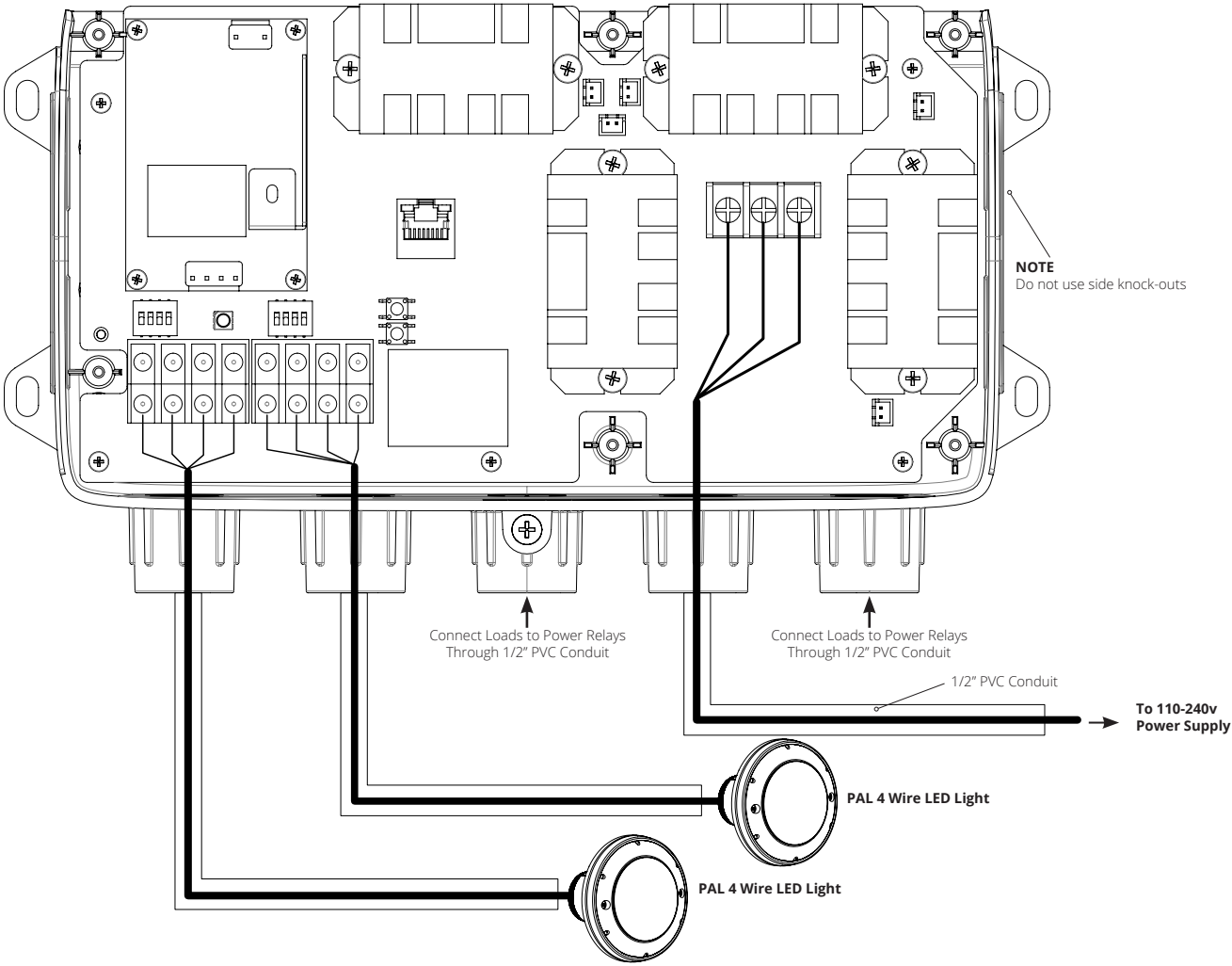
Step 3. Using the left 4 conduit entries at the bottom of the PAL TOUCH 5 (as shown), connect the 4 core wire from the PAL 4 WIRE LED LIGHTS. Please ensure the 4 cores are connected to the correct terminals. 4 x output conduit entries are provided in the enclosure to connect up to 4 x PAL-LED 4 Wire Pool Lights.

Step 4. The PAL TOUCH 5 Driver / Receiver is factory set to operate with the PCT-5 Touch 4 Transmitter supplied. Just fit the 2 x batteries supplied with the PCT-5. Optional Wi-Fi Control from Andoird or Apple Smart Phones and Tablets.

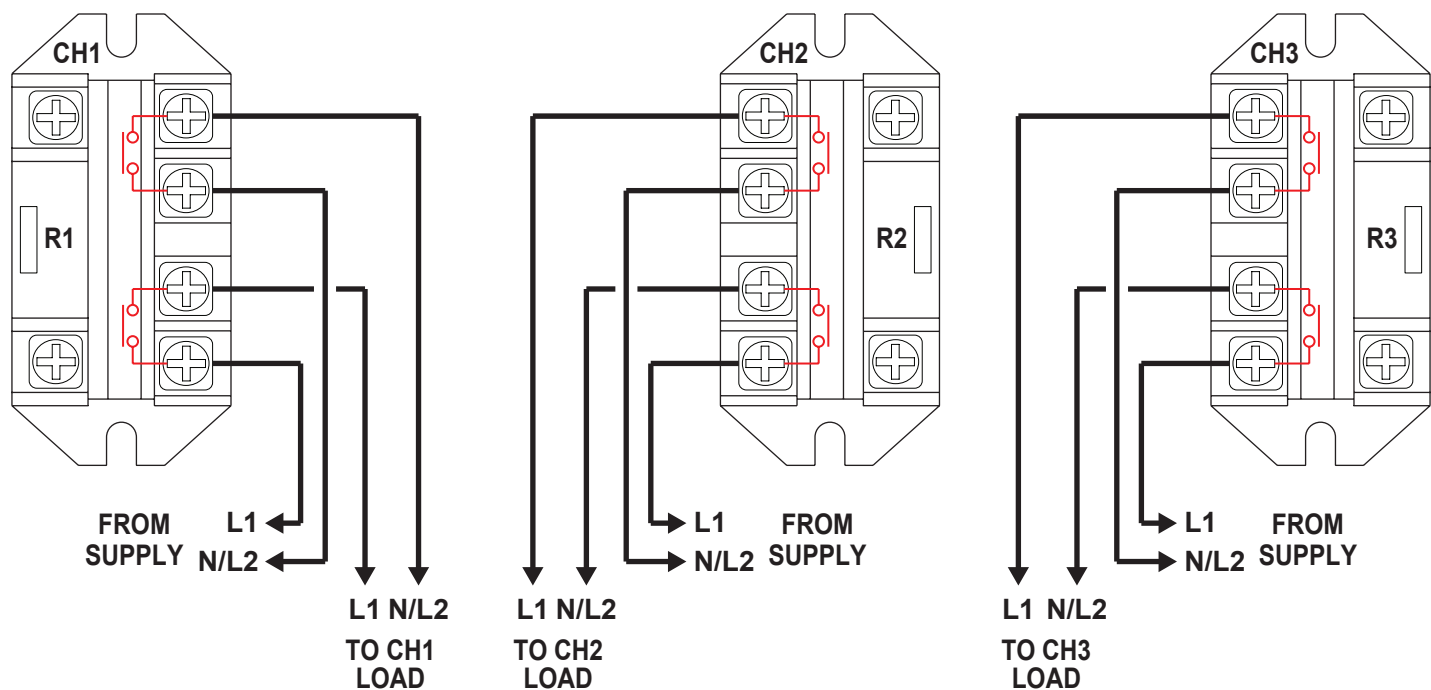
INSTALLATION INSTRUCTIONS FOR PAL TOUCH 5 RGB OUTDOOR DRIVER



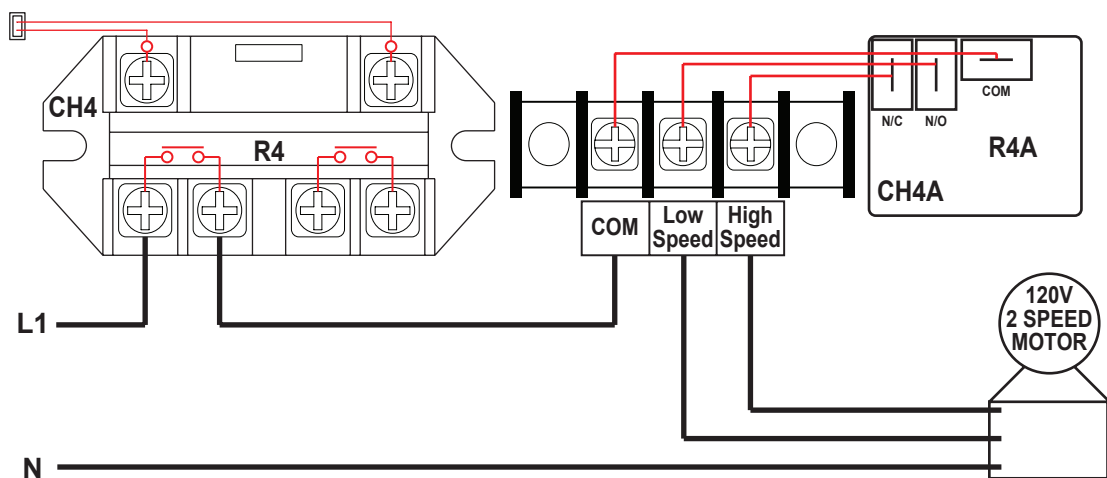
Remove conduit plugs as required, leaving plugs in unused conduit adapters. Install conduits as required.



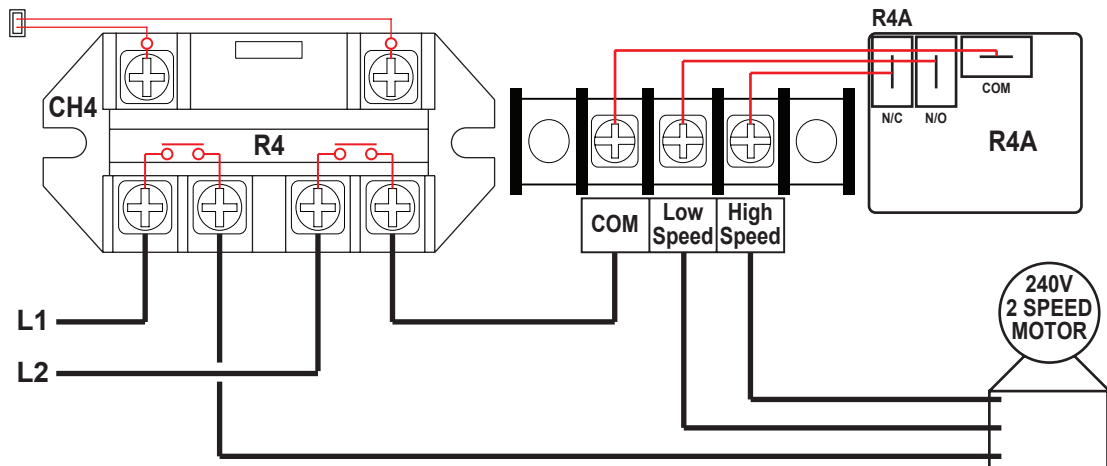
CABLE CONNECTION DETAILS FOR CHANNEL 1, 2 & 3.



CABLE CONNECTION DETAILS FOR CHANNEL 4 FOR 120V 2 SPEED MOTOR



CABLE CONNECTION DETAILS FOR CHANNEL 4 FOR 240V 2 SPEED MOTOR



OPERATING INSTRUCTIONS FOR TOUCH 5 WHEN WI-FI MODULE INSTALLED

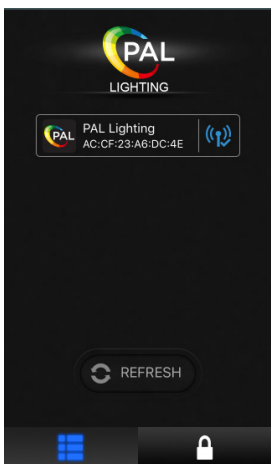
Step 1. Download PAL Lighting App to your iPhone or iPad from the iTunes App Store / Android phone from the Google Play Store.

Step 2. Go to your phone/tablet Wi-Fi settings. Select Wi-Fi option 'PAL Lighting'.

Step 3. Open the PAL Lighting app.



3A. Loading Screen



3B. Press refresh button until blue tick appears then touch on Window.



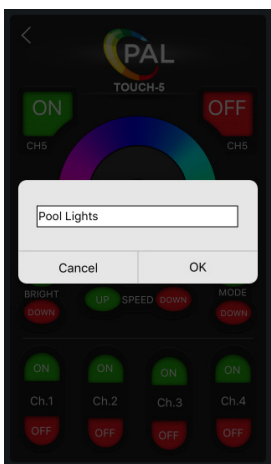
3C. Select TOUCH-5 to open the app.



4. Controlling the App. Select ON/OFF. When 'ON' is selected, you can control the color, brightness, mode and color change speed.



5A. Channel Naming: Touch the Channel Name



5B. Type in desired channel name.



5C. Channel Name appears.

COLOR WHEEL - Can Select any color from the wheel.

OPERATIONAL LED - Color selected is displayed here.

MODE SELECTION - UP/DOWN (7 modes)

SPEED - UP/DOWN (2/4/6/8/10 seconds)

BRIGHTNESS - UP/DOWN (100/80/60/40/20%)

Modes:

White - can change Brightness (BRIGHT) [default]

Color Change - can change Brightness & Speed:

Red, Amber, Green, Aqua, Blue, Purple, White.

Disco - can change Brightness.

White Gradual Change - can change Brightness & Speed.

Blue Gradual Change - can change Brightness & Speed.

Green Gradual Change - can change Brightness & Speed.

Red Gradual Change - can change Brightness & Speed.



6. Operating the Unit