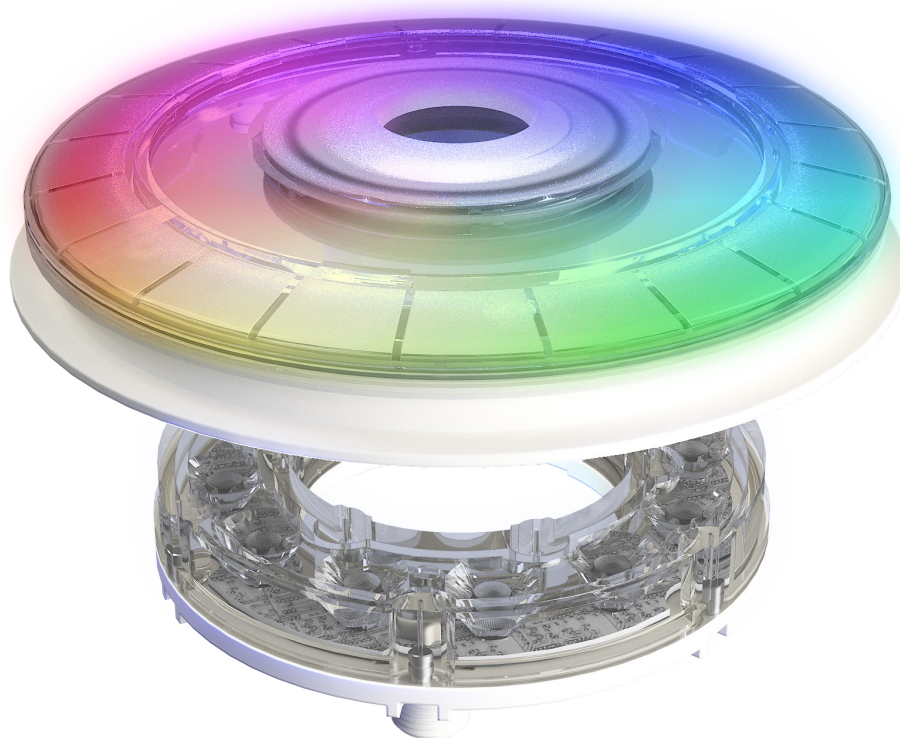




CONCRETE/VINYL NICHE BUBBLER

Installation and Operations Manual



GUNITE/CONCRETE

64-EGB-CGS-80	Evenglow Multi Color LED Bubbler for Gunite/Concrete Pools with 80ft Cable and Plug
64-EGB-CGS-150	Evenglow Multi Color LED Bubbler for Gunite/Concrete Pools with 150ft Cable and Plug

VINYL LINER/FG

64-EGB-FVS-80	Evenglow Multi Color LED Bubbler for Vinyl/Fiberglass Pools with 80ft Supply Cable and Plug
64-EGB-FVS-150	Evenglow Multi Color LED Bubbler for Vinyl/Fiberglass Pools with 150ft Supply Cable and Plug

PAL Lighting LLC
4830 Timber Creek Dr, Houston, TX 77017
North America: +1 (713)-946-4343
www.pallighting.com

Table of Contents

SECTION 1. SAFETY INSTRUCTIONS	3
SECTION 2. PREPARATION	3
2.1 PACKAGE CONTENTS	4
2.2 PREPARATION WORK	5
SECTION 3. INSTALLATION FOR GUNITE/CONCRETE POOLS	6
SECTION 4. INSTALLATION FOR VINYL/FG POOLS	10
SECTION 5. INSTALLATION FOR GUNITE/CONCRETE POOLS	14
SECTION 6. TROUBLESHOOTING	19
SECTION 7. REPLACEMENT PARTS	22

Section 1. SAFETY INSTRUCTIONS



Improper installation carries the potential for electrical hazards, presenting a risk of severe or even fatal injuries to pool users, installers, or bystanders due to the threat of electrical shock, and may also result in property damage.

For your safety, it is imperative that this product be installed and maintained by a licensed and qualified contractor specializing in pool equipment, adhering to local regulations. The individual responsible for maintenance should possess extensive experience in pool equipment installation and upkeep to ensure precise adherence to the instructions outlined in this manual. Prior to installation, thorough comprehension, and compliance with all provided warning notices and instructions are crucial. Failure to do so may lead to property damage, personal injury, or loss of life. Any improper installation and/or operation may void the product's warranty and pose significant electrical hazards, potentially resulting in severe harm, property damage, or fatality. It is strictly advised not to modify this equipment. Installer, please be aware that this manual contains vital information concerning the installation, operation, and safe utilization of this product, which should be communicated to the equipment's owner/operator.

Section 2. PREPARATION

This manual provides installation and operational instructions for the PAL Lighting Niche Bubbler.

Read the installation & operational manual before proceeding with the installation. Keep this manual for future reference.

Before starting the installation, check that you have the correct parts below. If any parts are missing, please call technical support at +1 (713)-946-4343.

Keep in mind that the deeper the lens is underwater, the less lighting effect will be above the water. Plume height data should only be used as a reference - actual plume height may vary based upon a variety of factors including but not limited to system plumbing and water conditions. Use the table below to determine the approximate plume height for each lens.

2.1 PACKAGE CONTENTS

PAL Lighting Niche Concrete Bubbler

- 1 x Plug Cord
- 1 x ¾" Spout Lens
- 1 x 1.2" Spout Lens
- 1 x Bubbler Faceplate
- 1 x Bubbler Lens
- 1 x Concrete Seal
- 1 x Concrete Render Ring
- 1 x Concrete Render Ring Cap
- 1 x Donut Light
- 1 x Donut Light Lens
- 1 x Concrete Niche
- 1 x 40mm Pipe Adapter
- 1 x Plug Conduit Adapter
- 1 x Wingnut & Seal
- 6 x M4 Screws

PAL Lighting Niche Vinyl/Fiberglass Bubbler

- 1 x Plug Cord
- 1 x ¾" Spout Lens
- 1 x 1.2" Spout Lens
- 1 x Lens Gasket
- 1 x Render Ring
- 1 x Render Ring Gasket
- 1 x Vinyl/FG Niche
- 1 x Niche Gasket
- 1 x Donut Light
- 1 x Nut/O-Ring
- 1 x Niche Nut
- 1 x 40mm Pipe Adapter
- 1 x Plug Conduit Adapter
- 1 x Wingnut & Seal
- 6 x M4 Screws
- 6 x M5 CSK Screws

IMPORTANT NOTICE

This is a 24V light, and it requires a compatible 24V transformer for proper operation.
Refer to bullet 3.

The PAL WaterSphere is only for gunite/concrete installations. We actively discourage users from using the PAL WaterSphere on a sun shelf.

2.2 PREPARATION WORK

1. Ensure that the pool's electrical system complies with the standards outlined in the current National Electrical Code (NEC).

2. This 24V underwater light must be installed in accordance with the National Electrical Code by a certified electrician or a qualified pool technician.

NOTE: No Bonding Terminal is required on the forming shell since the fixture is an all-plastic construction and complies with NEC article 680 Requirements.

3. This underwater light is designed for use with the 64-PCR Series Drivers.

NOTE: The Junction Box and the low voltage transformer is located at least 4 (four) inches above ground level or eight (8) inches above maximum water level, whichever is higher. The Junction Box must be at least 48 inches from the edge of the pool.

CANADIAN INSTALLATION

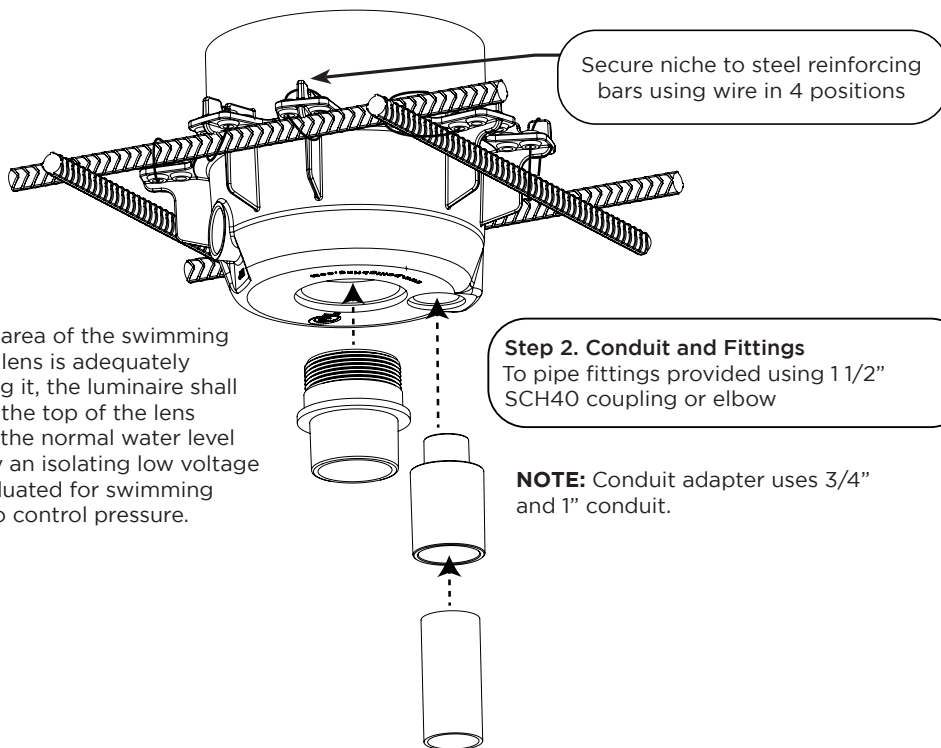
Be sure the electrical system of your pool conforms with the following requirements of the Canadian Electrical Code (CEC), CSA C22.1 and all local codes and ordinances. A licensed or certified electrician must install the electrical system to meet or exceed those requirements before the light and (fixture-housing) is installed. Failure to do so could result in death or serious injury to service technician, pool users or others due to electrical shock.

IMPORTANT NOTICE

Section 3. INSTALLATION FOR GUNITE/CONCRETE POOLS

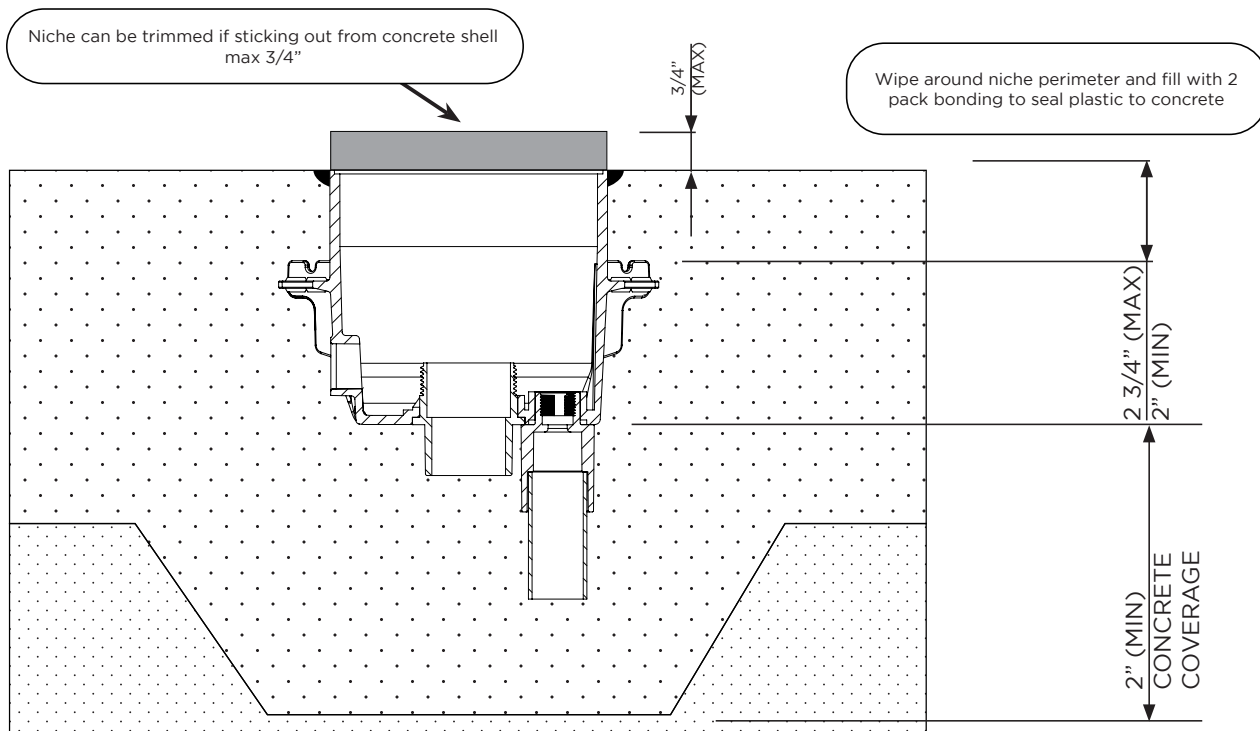
A. Fixing Bubbler Niche to Steel

NOTE: Use PVC solvent cement on all provided fittings.

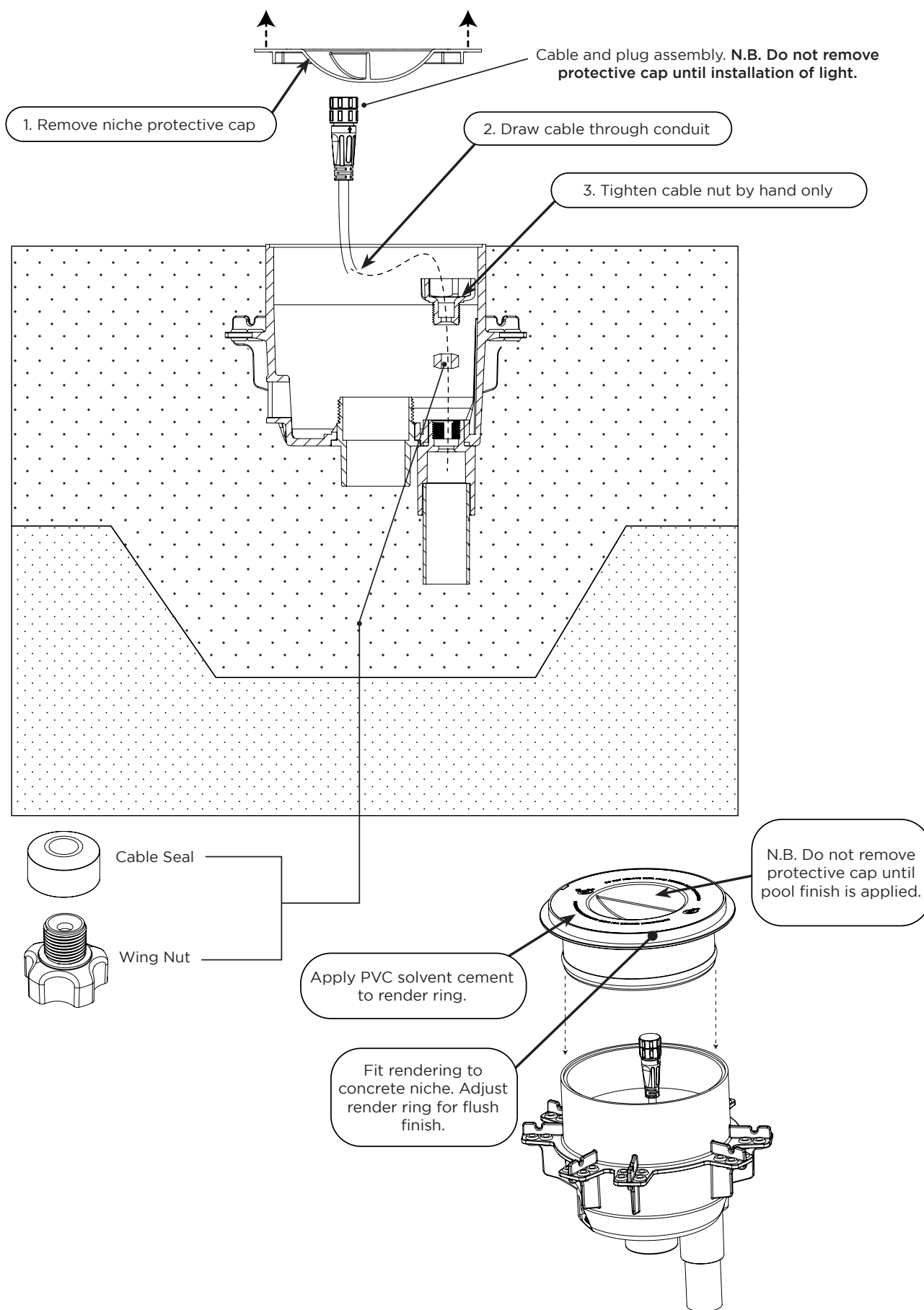


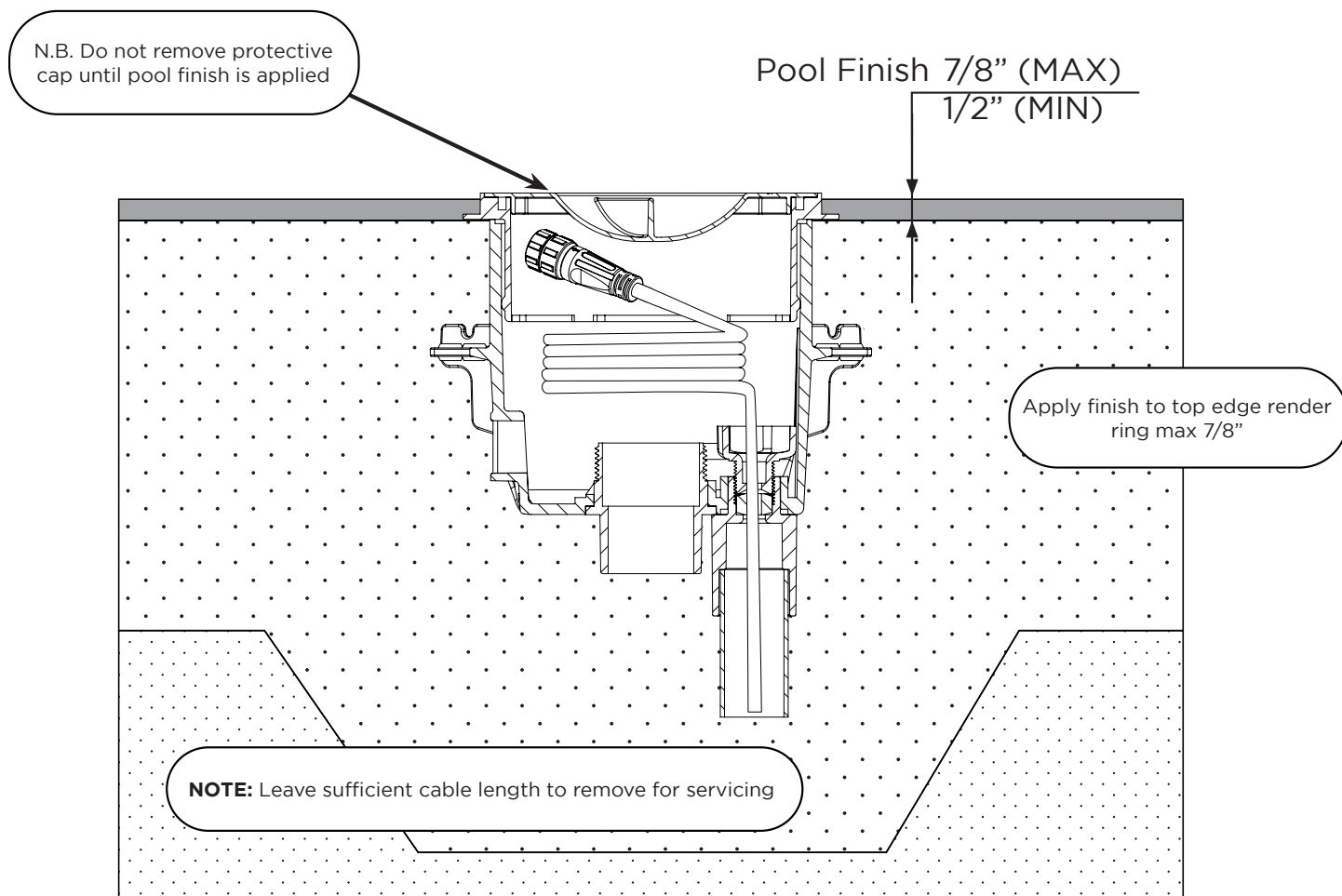
Except when the luminaire is installed in an area of the swimming pool that is not used for swimming and the lens is adequately guarded to keep any person from contacting it, the luminaire shall be installed in or on a wall of the pool, with the top of the lens opening not less than 25mm (1 inch) below the normal water level of the pool. For supply connection, use only an isolating low voltage power supply with ungrounded output, evaluated for swimming pool use. Recommended to install a valve to control pressure.

B. Concrete Stage



C. Installing Cable



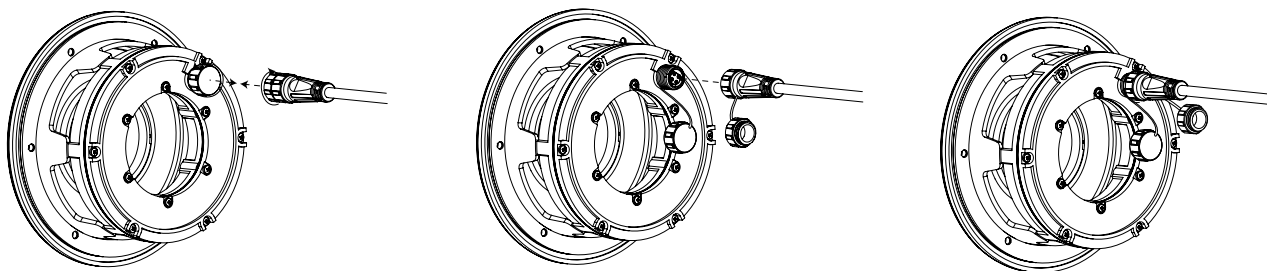


D. Installing Luminaire

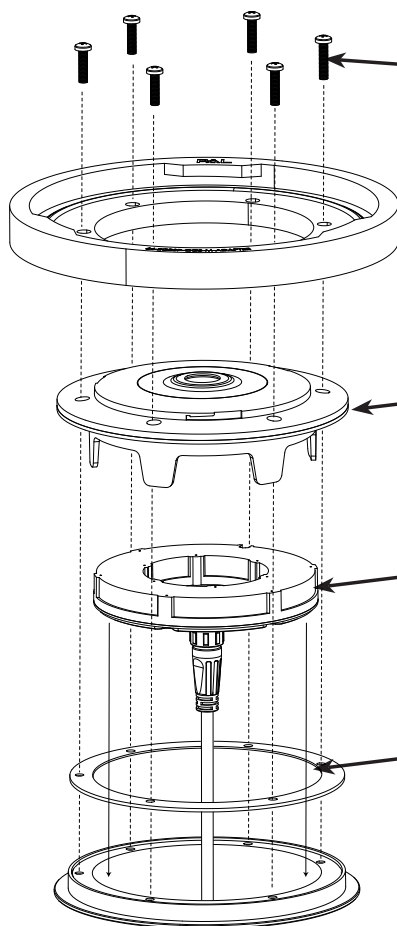
NOTE: The three machined screws will attach to the light mount and go through the gray plate into the niche to secure the light mount. The fourth pan head screw will secure only the gray gasket plate.

NOTE: The niche may cause the light mount to not align straight up and down. To fix this, turn the light mount to align with the screw hole and attach.

Remove protective caps from plug and light socket by unscrewing.



Insert plug into light and secure with screw-on cap.



Secure collar to niche using
6 x M4x12mm screws

Optional lens (only available
for 600mm and 800mm
Spheres)

Install luminaire. Luminaire rests
on ribs inside niche.

Install gasket. Gasket is placed
inside outer rib of niche.

1. Once the gray face plate and light mount have been attached, pull the attached cable through the light mount and conduit back to a 24v transformer.

NOTE: When wiring into the transformer, there will be a brown and blue terminal for the wires to screw into on the left side.

2. Attach the light to the mounting plate with the thin screws at the 1, 3, and 7 o' clock positions. See Figure 4.

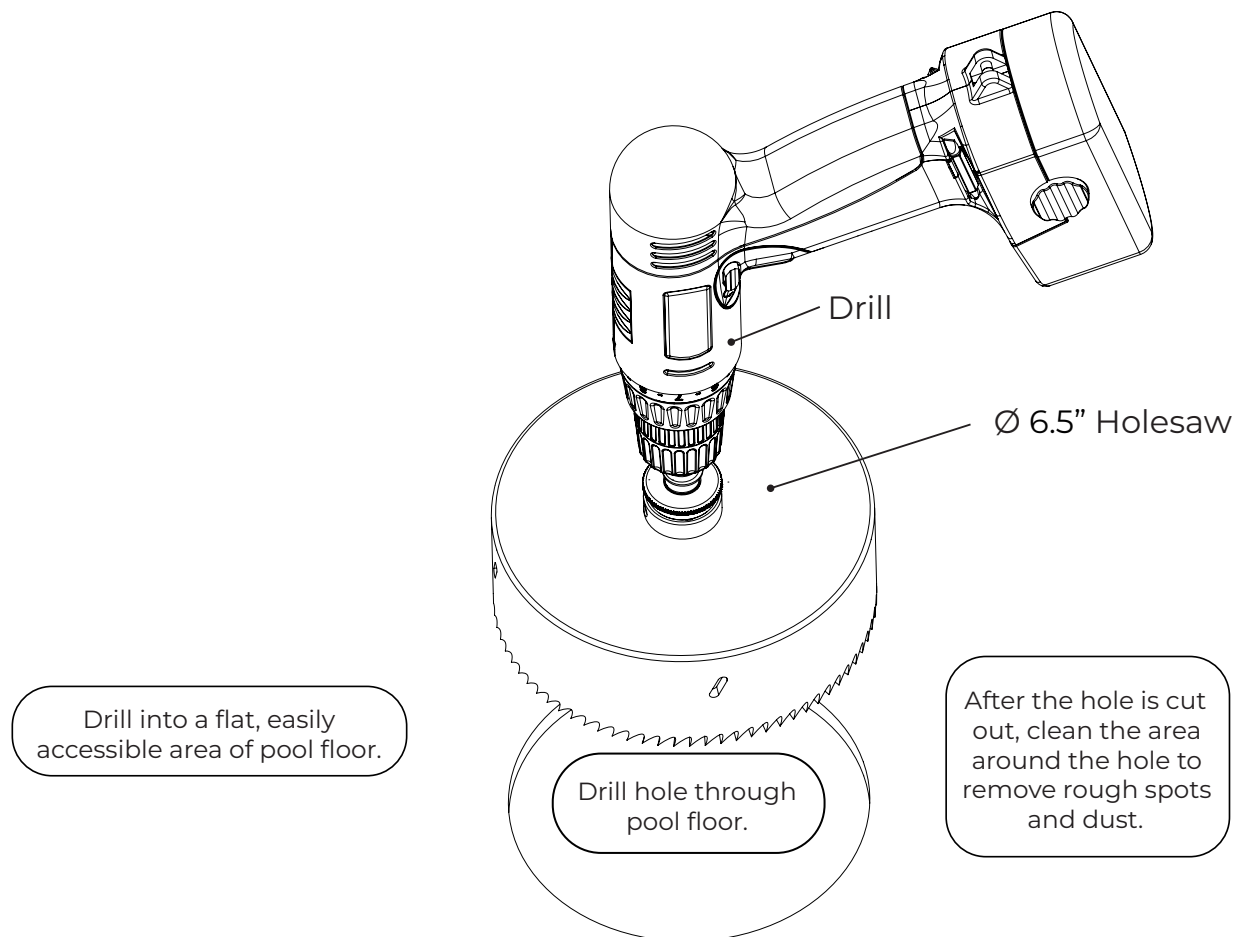
Section 4. INSTALLATION FOR VINYL/FG POOLS

A. Fixing Bubbler Niche to Steel

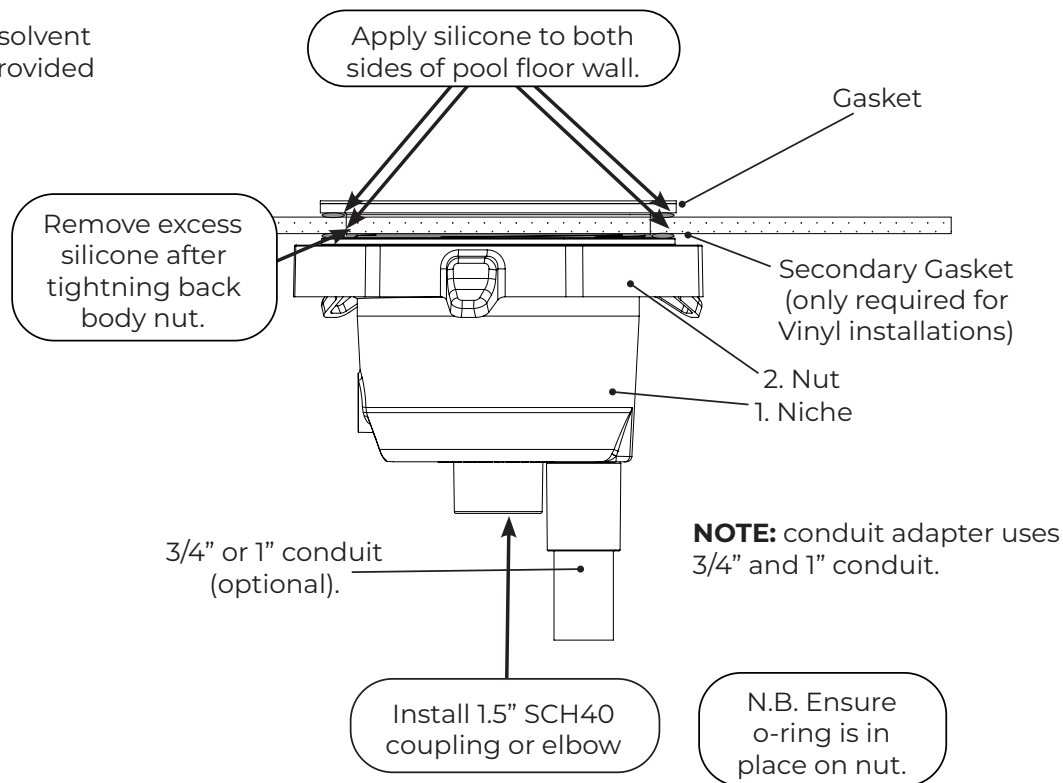
Step 1. Drill Hole

- i. Use a 6 1/2" hole saw in desired location for Bubbler Niche.
- ii. The niche may be installed to the Fibreglass using marine grade epoxy or silicone to the bottom of the niche flange.
- iii. Use provided gaskets only on vinyl installations. One on top, one on bottom of the vinyl.
- iv. Screw nut up firmly. Make sure 'o' ring is installed.

NOTE: Installing conduit on side - must put the nut on first.



NOTE: use PVC solvent cement on all provided fittings.

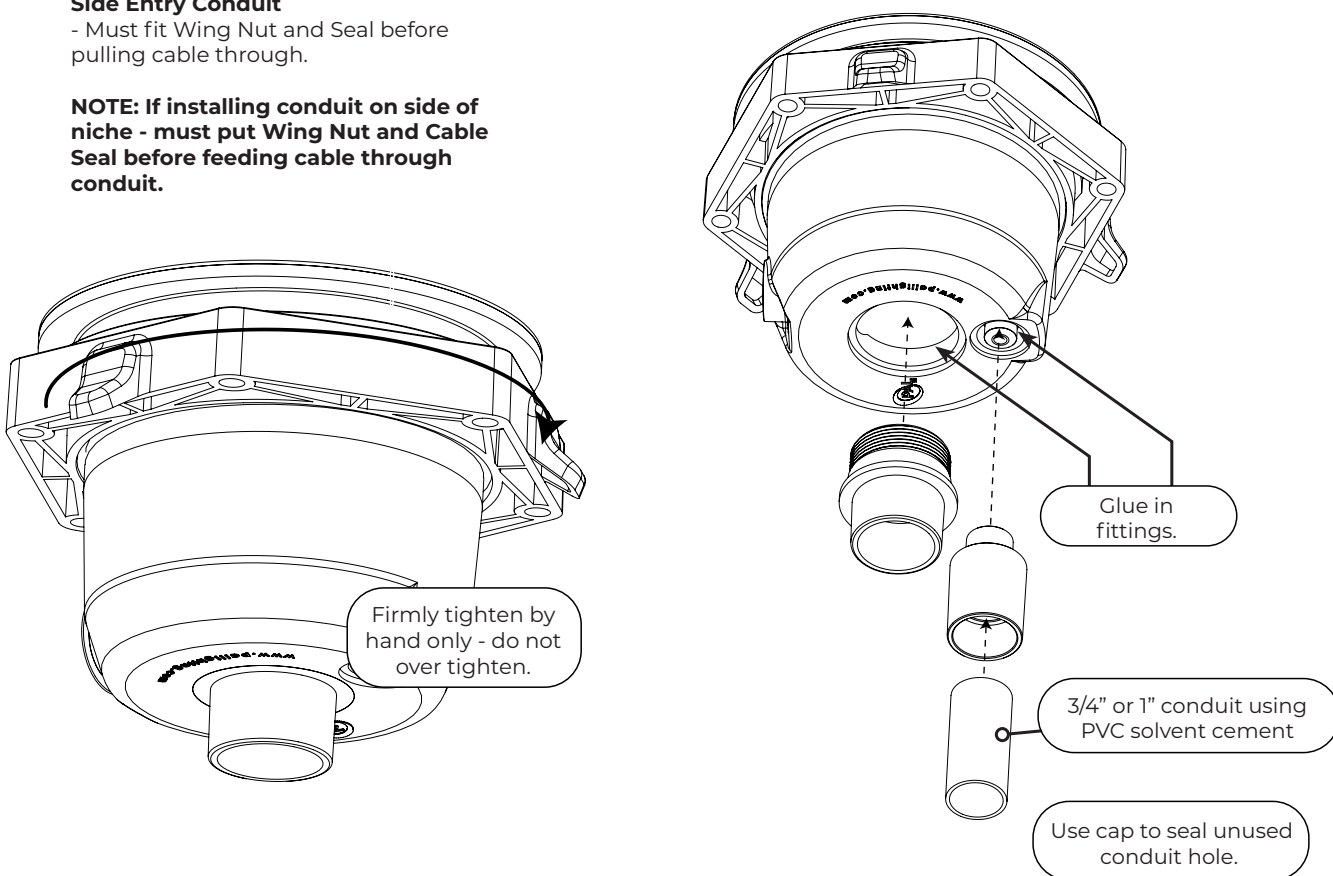


Except when the luminaire is installed in an area of the swimming pool that is not used for swimming and the lens is adequately guarded to keep any person from contacting it, the luminaire shall be installed in or on a wall of the pool, with the top of the lens opening not less than 457 mm (18 inches) below the normal water level of the pool. For supply connection, use only an isolating low voltage power supply with ungrounded output, evaluated for swimming pool use.

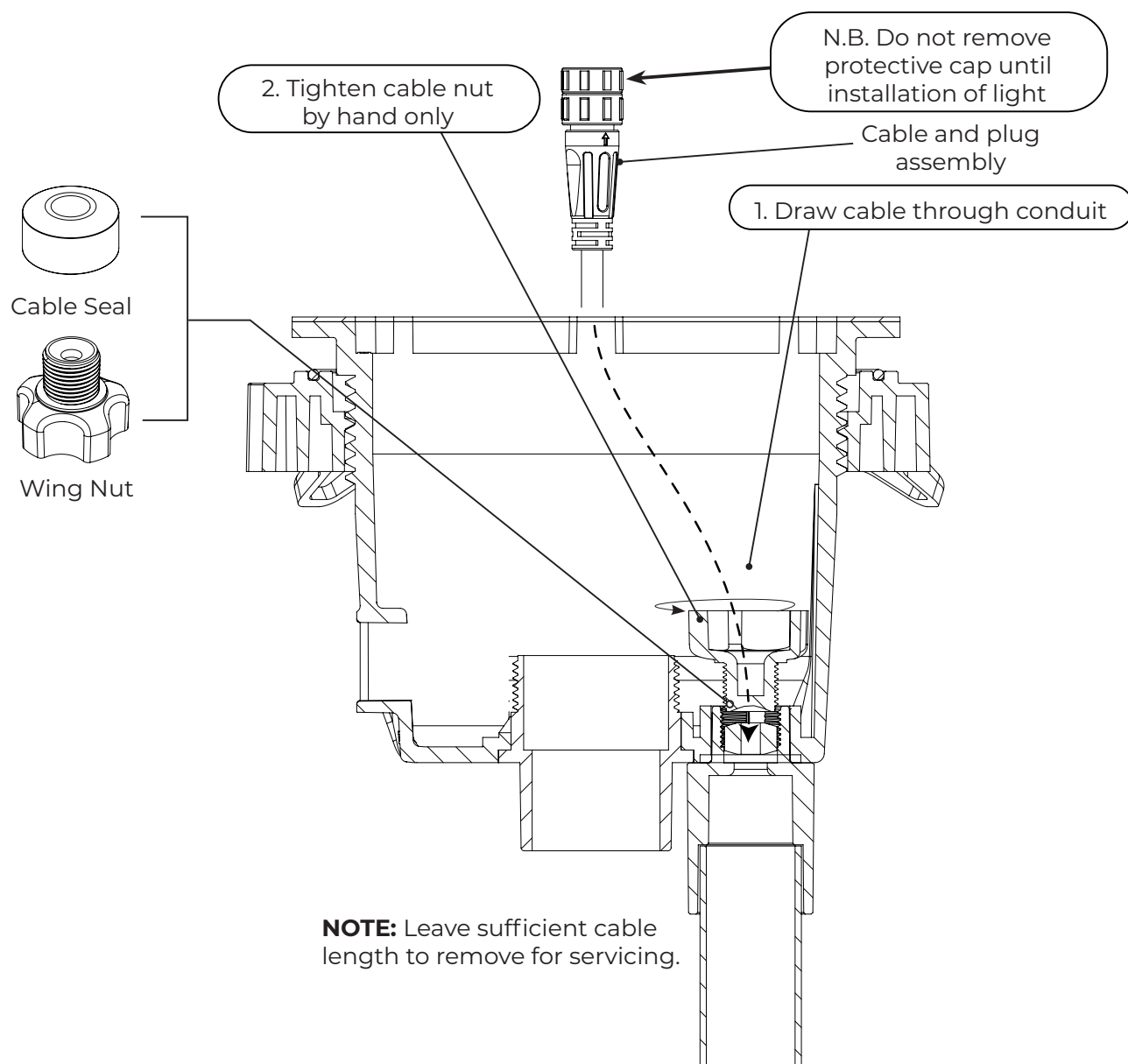
Side Entry Conduit

- Must fit Wing Nut and Seal before pulling cable through.

NOTE: If installing conduit on side of niche - must put Wing Nut and Cable Seal before feeding cable through conduit.



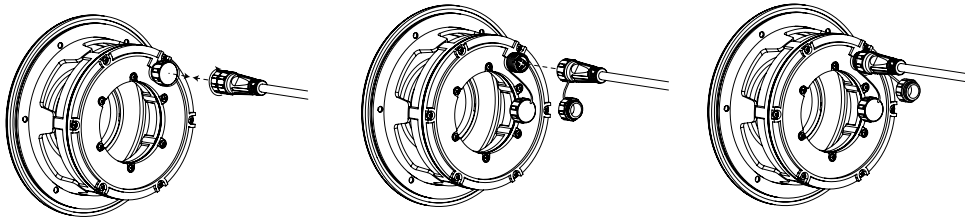
Step 3. Installing Cable



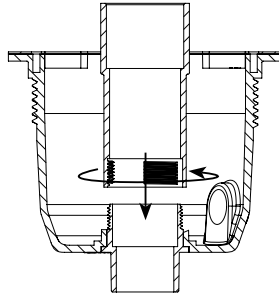
If you wish to install an A&A Snorkel, contact PAL Lighting

Step 4. Installing Luminaire

Remove protective caps from plug and light socket by unscrewing.



Insert plug into light and secure with screw-on cap.

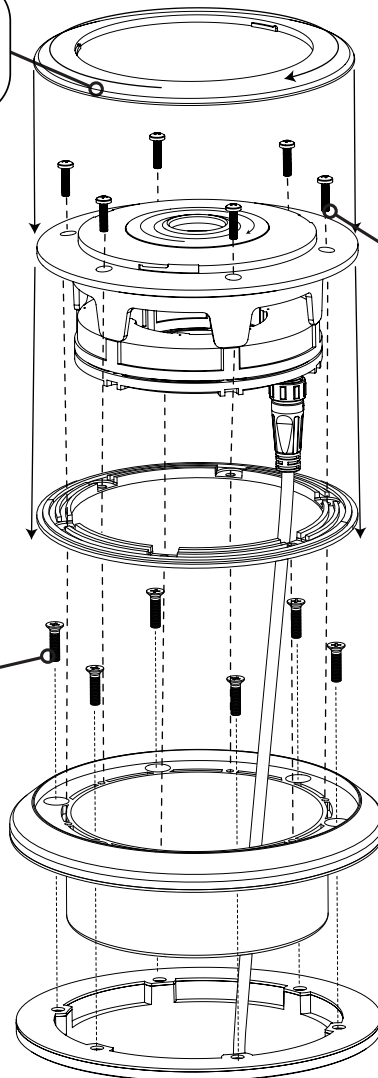


Before installing luminaire screw on internal pipe fitting.

3. Position dress ring onto bubbler and rotate until clicks into position.

2. Secure bubbler in position with 6 x M4 screws.

1. Secure render ring to bucket with 6 x M5 countersunk screws.



Section 5. INSTALLATION FOR GUNITE/CONCRETE POOLS

HARDWARE INSTALLATION INSTRUCTIONS FOR RGB LIGHTING CONTROLLERS

1. The PCR -1Z-SM/PCR-1Z/PCR-2Z Class 2 Power Supply is a weatherproof construction (IP65) and should be mounted on a flat surface using the mounting legs on the enclosure with appropriate fixtures for the mounting substrate and in a suitable position to suit the intended location of the PAL 4 Wire LED Pool Lights and installed to comply with all the requirements of the National Electrical Code (NEC) and all relevant local codes and ordinances.

NOTE: The driver enclosure should be placed a minimum of 5 feet away from the inner pool wall horizontally and should sit no lower than 1 foot above the maximum water level of the pool, measured up to the top of the enclosure.

NOTE: To properly install the enclosure, utilize its mounting legs and the provided screw set. If mounting on a concrete or block wall, mark the hole locations, drill 3/16" holes with a masonry drill, insert the provided Star Plugs into the holes, and secure them using the stainless-steel screws provided.

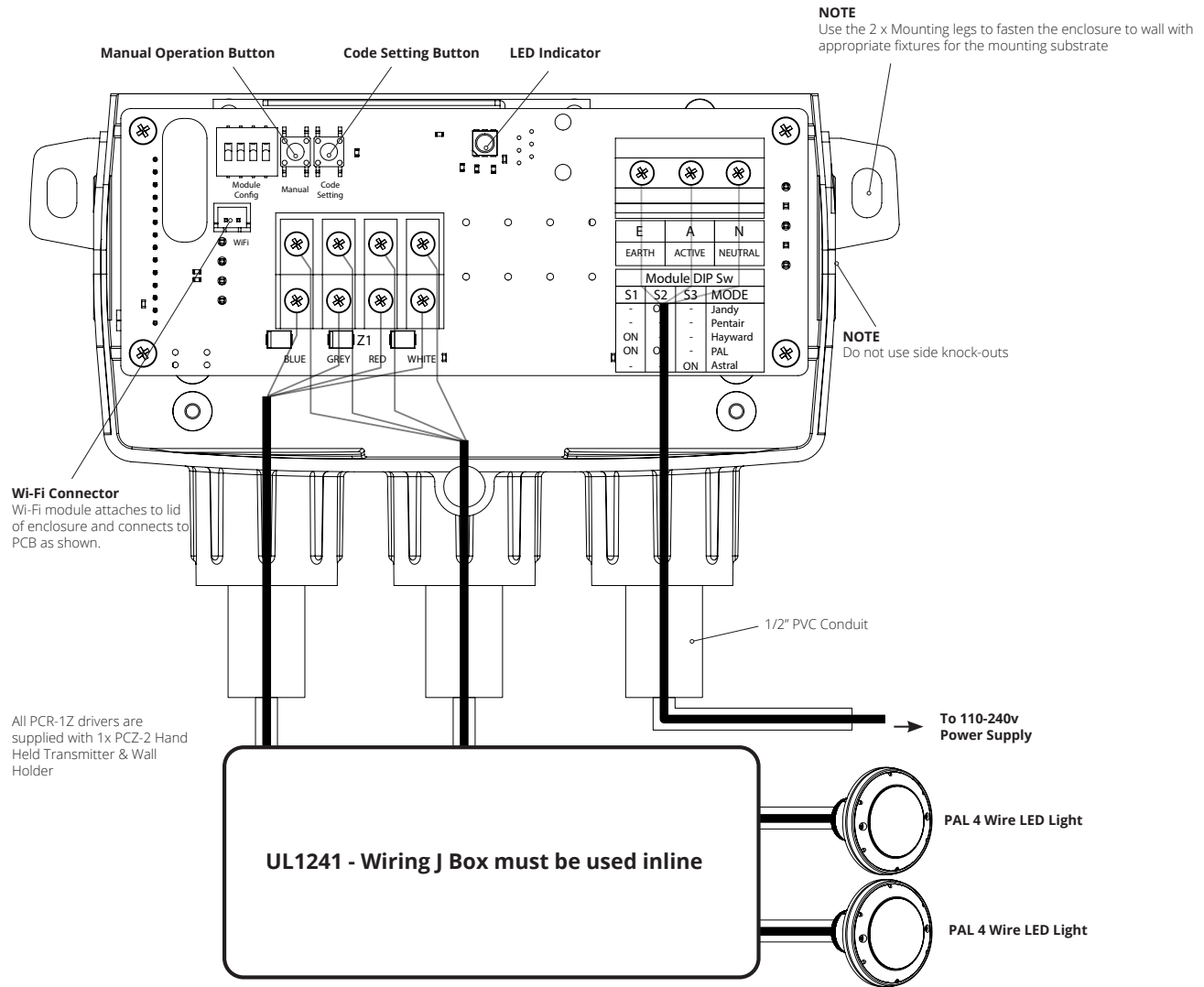
2. Using the conduit entry on the bottom (bottom-front on PCR-2Z) right hand side of the PCR-1Z-SM/PCR-1Z connect the 100-120V power supply to NEC code requirements.

3. Using the remaining conduit entries at the bottom of the driver, connect the 4-core wire from the PAL 4 WIRE LED LIGHTS. Please ensure the 4 cores are connected to the correct terminals. The enclosure includes 2 output conduit entries designed for connecting to 2 PAL-LED 4 Wire Pool Lights.

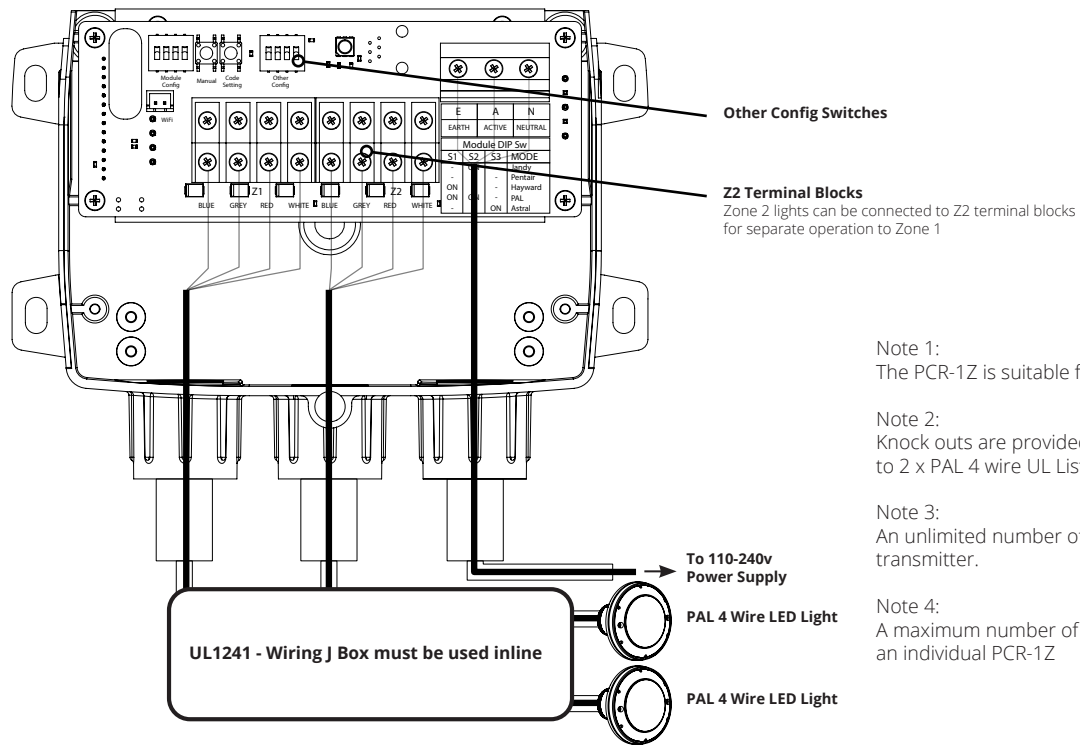
4. The Lighting Controller is factory set to operate with the PCZ-2 Transmitter supplied. Simply fit the two batteries included with the PCZ-2 Transmitter. **The PCR-1Z-SM does not operate with the PCZ-2 Transmitter.**

Please refer to the information supplied with the PCZ-2 Transmitter for full operating instructions and features of the system.

INSTALLATION INSTRUCTIONS FOR PCR-1Z-SM / PCR-1Z RGB OUTDOOR DRIVER



INSTALLATION INSTRUCTIONS FOR PCR-2Z RGB OUTDOOR DRIVER



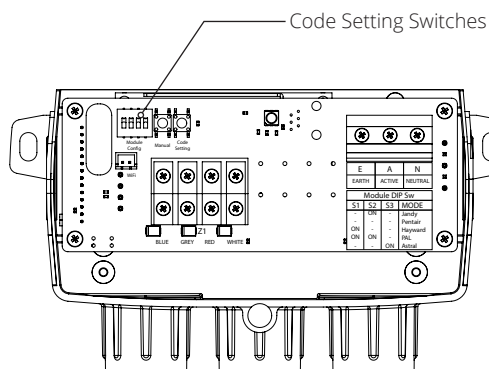
Note 1:
The PCR-1Z is suitable for PAL 4 wire lights.

Note 2:
Knock outs are provided in the enclosure to connect up to 2 x PAL 4 wire UL Listed Pool Lights.

Note 3:
An unlimited number of drivers can be controlled by one transmitter.

Note 4:
A maximum number of 4 x Transmitters can be coded to an individual PCR-1Z

CLONING SETTINGS (PCR-1Z & PCR-2Z AUTOMATION AND PCR-1Z-SM)

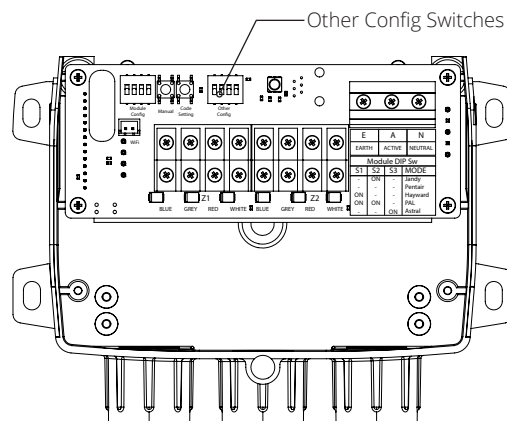


Switch 1	Switch 2	Switch 3	Switch 4	Mode
OFF	ON	OFF	ON	JANDY
OFF	OFF	OFF	ON	PENTAIR
ON	OFF	OFF	ON	HAYWARD
ON	ON	OFF	ON	PAL
OFF	OFF	ON	ON	ASTRAL

Note:

- Must turn off power before making DIP switch selection.
- When syncing PAL lights to other OEM lights, static colors will match but color change mode timing may vary.
- If the PAL Lights are to be used with Automation, do not use the handheld remote control and disconnect the WiFi module from the board if so equipped.
- If the Automation does not turn the PAL lights on or off and there is power to the driver, press the Z1 button one time to turn on the PAL Driver.
- Note that the PAL features of infinite color selection and dimmability are not available while in Cloned mode.

ZONE SETTINGS - PCR-2Z ONLY



Switch 3	Switch 4	Mode
OFF	OFF	6000K
ON	OFF	5000K
OFF	ON	4000K
ON	ON	3000K

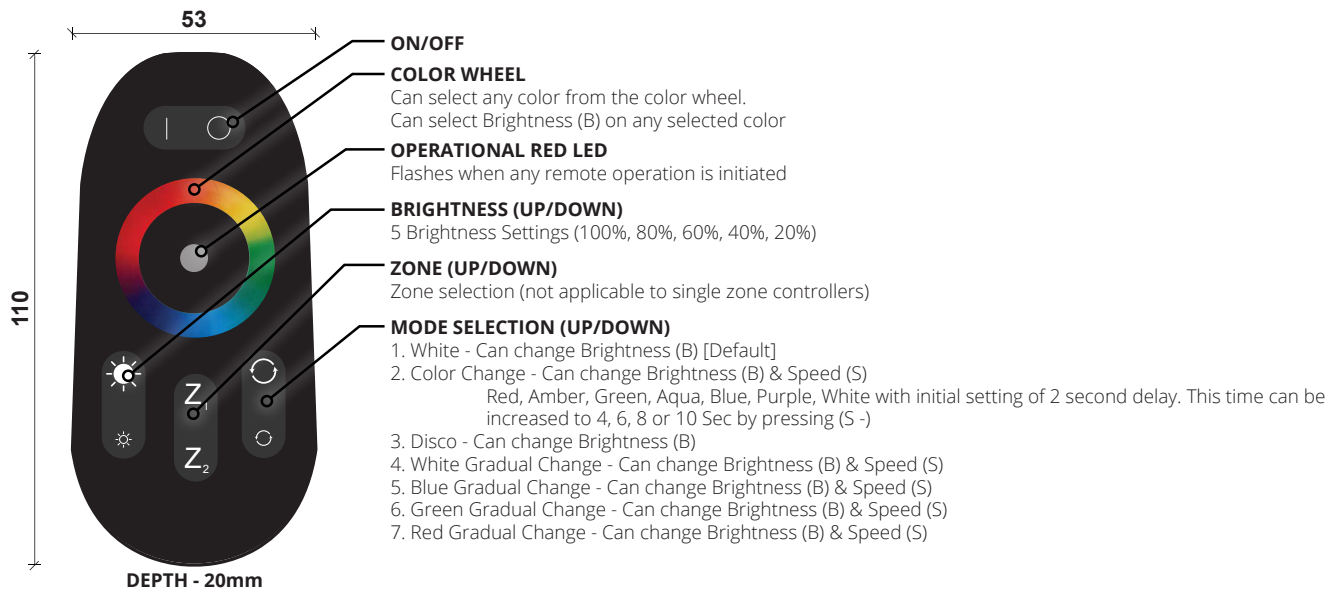
Other Config Operation

- Must turn off power before making DIP switch selection.
- Dip Switch 2: Toggles between 1 and 2 zone operation
- Dip Switch 1: When in single zone mode, this switch selects whether the driver operates entirely as Z1 or Z2 on the remote.
- Dip Switches 3 & 4 change the approximate color temperature of mixed white lights.

Switch 1	Operation
ON	Zone 2
OFF	Zone 1

Switch 2	Operation
ON	Single Zone Operation
OFF	Two Zone Operation

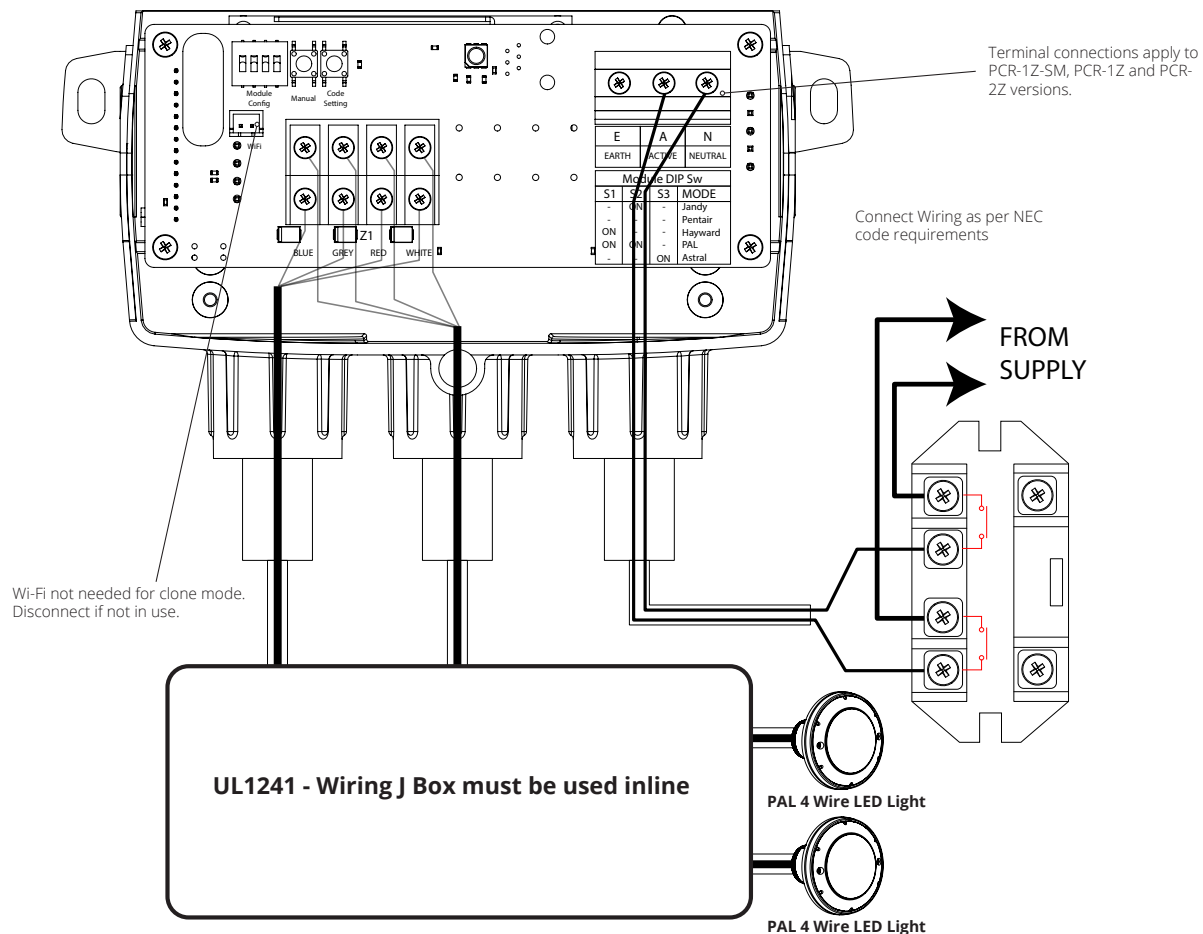
PAL TOUCH PCZ-2 TRANSMITTER HAND HELD REMOTE



FEATURES

1. Matching Code - Apply power to the receiver. Then press Z₁ once within 5 seconds. The output light will flash white 3 times if matching is successful.
2. Clearing Code - Apply power to the receiver. Hold down Z₁ for 3 seconds. The output light will flash 6 times if clearing the code is successful. After successfully clearing the existing code a new code will have to be applied by following the matching code procedure above.
3. 1 Transmitter (PCZ-2) can operate an unlimited number of Receivers (PCR-1Z)
4. 1 Receiver (PCR-1Z) can be controlled by a maximum of 4 Transmitters (PCZ-2)
5. Touching the color wheel will reset any Mode selection.
6. Memory Feature - Remembers color selection after being switched off.
7. Once the transmitter and receiver are successfully coded the receiver will remember the code if powered off.

AUTOMATION DEDICATED LIGHT OUTPUT RELAY FOR CLONE MODE



Section 6. TROUBLESHOOTING

Remote control is unresponsive — bubbler is not reacting to commands

- 1. Check the red light:** When pressing buttons, a red light should appear in the center of the color wheel.
 - a. If not, check that the batteries are fresh and properly installed.
- 2. Resync the remote:**
 - a. Open the driver and verify DIP switches 1, 2, and 4 are in the UP position.
 - b. Press the Code Setting button — LED 3 will blink once.
 - c. Then, tap Z1 on the remote 3 times.
 - d. If successful, the LED will blink 3 times, and control will be restored.
- 3. If issues persist, there may be a short**

Bubbler Lights are not dimming

- 1. Check DIP Switches:** Ensure switches 1, 2, and 4 are in the UP position.
- 2. Disconnect the Remote:**
 - a. Press the Code Setting button once (like a doorbell).
 - b. Then hold Z1 on the remote.
 - c. The driver will blink 5 times, indicating the remote has been disconnected.
 - d. You'll now need to reconnect the remote.
- 3. Soft Reset:**
 - a. Press down firmly on the DIP switches (like squashing a bug).
 - b. While holding them, press and hold the Code Setting button for 3 seconds. Release the Code Setting button, then the DIP switches.
 - c. Try syncing the remote again.

Bubbler Lights are not coming on

- 1. Verify Power Input**
 - a. Confirm the driver is receiving 120V power.
 - b. Check that no breakers or GFCIs are tripped.
- 2. Test with MANUAL Button**
 - a. Press the MANUAL button on the driver.
 - b. If LED 3 turns on, the driver is working — proceed to troubleshoot the lights.
 - c. If LED 3 does not turn on, continue with the steps below.
- 3. Check Internal Driver Indicators**
 - a. Blue LED (behind the board): Confirms the transformer is powered.
 - b. Red LEDs (bottom left of the board): Confirms the board is receiving proper power.
 - c. Inspect for damage: Look for any charring or signs of a power surge inside the driver.
- 4. Isolate Potential Shorts**
 - a. If the transformer is working but LED 3 still doesn't activate when pressing MANUAL:
 - b. Disconnect all connected lights.
 - c. Try the MANUAL button again.

A short light can prevent the driver from powering up properly.

Bubbler Lights are blinking

1. For systems with multiple lights, blinking may indicate a faulty fixture.
 - a. Disconnect one white wire at a time from the driver.
 - b. When LED 3 stops blinking, you've identified the faulty light.

Bubbler Lights are not synced

1. Identify the Out-of-Sync Color

- a. Observe the lights and determine which color (Red, Green, or Blue) is not matching across all fixtures.
- b. Use this to trace the issue back to a specific wire.

2. Check Driver Wire Connections

If the issue is with:

- a. Green color → inspect the GREY wire at the driver.
- b. Red color → inspect the RED wire.
- c. Blue color → inspect the BLUE wire.

Make sure each wire is securely connected, not loose, and free of corrosion.

3. Inspect Wiring Integrity

- a. Check if any wire was nicked or cut during stripping at the driver connection point or near the light head.
- b. Damaged conductors can cause signal issues and syncing problems.

4. Examine the Light Head Connection

- a. Look for corrosion or brown burn marks at the light head where it connects to the cable.
- b. This often indicates the nut was not properly tightened, allowing water intrusion at the back of the light, which can cause a short.

System is not syncing with Automation

1. Intellicenter Compatibility

- a. If using an Intellicenter system, verify the version:
 - i. Version 2.0 is not compatible with our lights unless an Intellicenter-programmed board is installed.
- b. Upgrading may be necessary for full sync functionality.

2. Check DIP Switch Configuration

- a. Confirm your DIP switch settings match the required configuration for your specific automation system.
- b. Incorrect settings can prevent lights from syncing properly.

3. Perform a Soft Reset

To reset the driver and DIP switches:

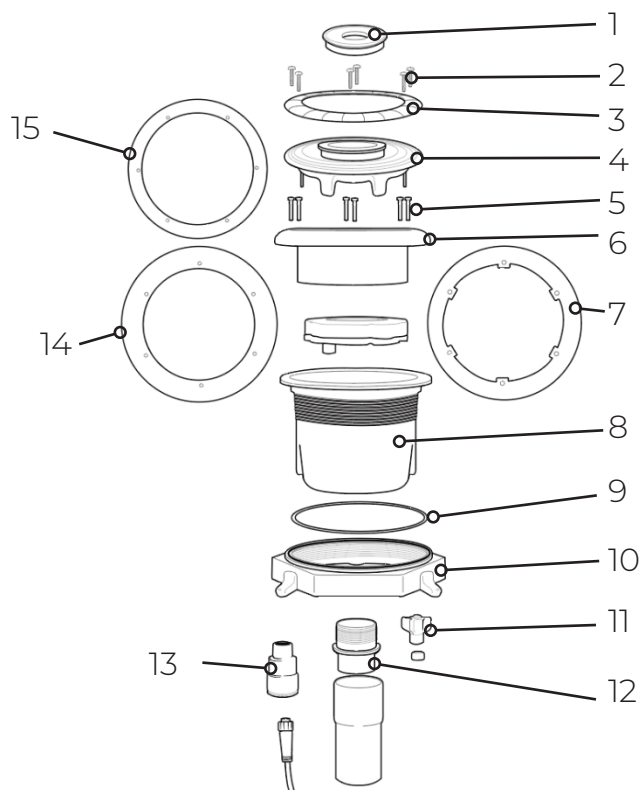
- a. Place your finger firmly on the DIP switches (press as if squashing a bug). While holding them, press and hold the Code Setting button for 3 seconds.
- b. Release the Code Setting button first, then release the DIP switches.
- c. Check to see if the lights have synced.

PAL BUBBLER WINTERIZATION RECOMMENDATIONS

Ensure the water level is at least 4 inches above or below the light, based on the specific winterization requirements of the pool. Always consult a local swimming pool professional to determine the correct procedure for your region. Never drain water from the pool without first checking local groundwater levels, as this may cause structural damage.

NOTE: If water is trapped in conduit, damage may occur from freezing expansion.

Section 7. REPLACEMENT PARTS



Replacement Parts Vinyl/FG Bubbler		
Item	Part Number	Description
1	64-EGB-SPOUT-0.75	Spout Lens ¾"
	64-EGB-SPOUT-1.2	Spout Lens 1.2"
2	64-EGB-FVS-SCREWS	M4 Screws
3	64-EGB-FACEPLATE	Bubbler Faceplate
4	64-EGB-LENS	Bubbler Lens
5	64-EGB-FVS-SCREWS	M5 CSK Screws
6	64-EGB-FVS-CR	Vinyl/FG Render Ring
7	64-EGB-FVS-CGN	Niche Gasket
8	64-EGB-FVS-N	Vinyl/FG Niche
9	64-EGB-FVS-BOS	Nut/O-Ring
10	64-EGB-FVS-NUT	Niche Nut
11	64-EGB-WNS	Niche Wingnut & Seal
12	64-EGB-SPOUTPF	40mm Pipe Adapter
13	64-EGB-CA	Plug Conduit Adapter
14	64-EGB-FVS-CRFR	Render Ring Gasket
15	64-EGB-FVS-BLS	Lens Gasket

This image shows a full page of blank white paper with horizontal ruling lines. The lines are evenly spaced and run across the width of the page, providing a template for writing or drawing. There are no margins, text, or other markings present.

