

EVENGLOW
EGF-XL INSTRUCTIONS

CONTENTS

| PAGE | |
|------|-------------------------|
| 2 | Guides and Warnings |
| 3 | Fibreglass Installation |
| 5 | Connecting Light |
| 7 | Connecting to driver |
| 8 | Troubleshooting |
| 8 | Terms and Conditions |

GUIDES AND WARNINGS

Tools Required:

No. 2 Phillips Screw Driver for install or removal of light

NOTE: Do not use power tools such as cordless drills as this can cause faults and damage to the product.

WARNING:

This guide contains important information about the correct installation of the PAL Even Glow fibreglass light.

This light should be installed by a qualified installer (e.g. pool builder and/or qualified electrician), in accordance with EU standards.
Maximum installation depth for the lights is 400mm These lights should be mounted in a location that is easily accessible without the need for entering or lowering the pool water.

Do not operate light unless completely submerged in water.

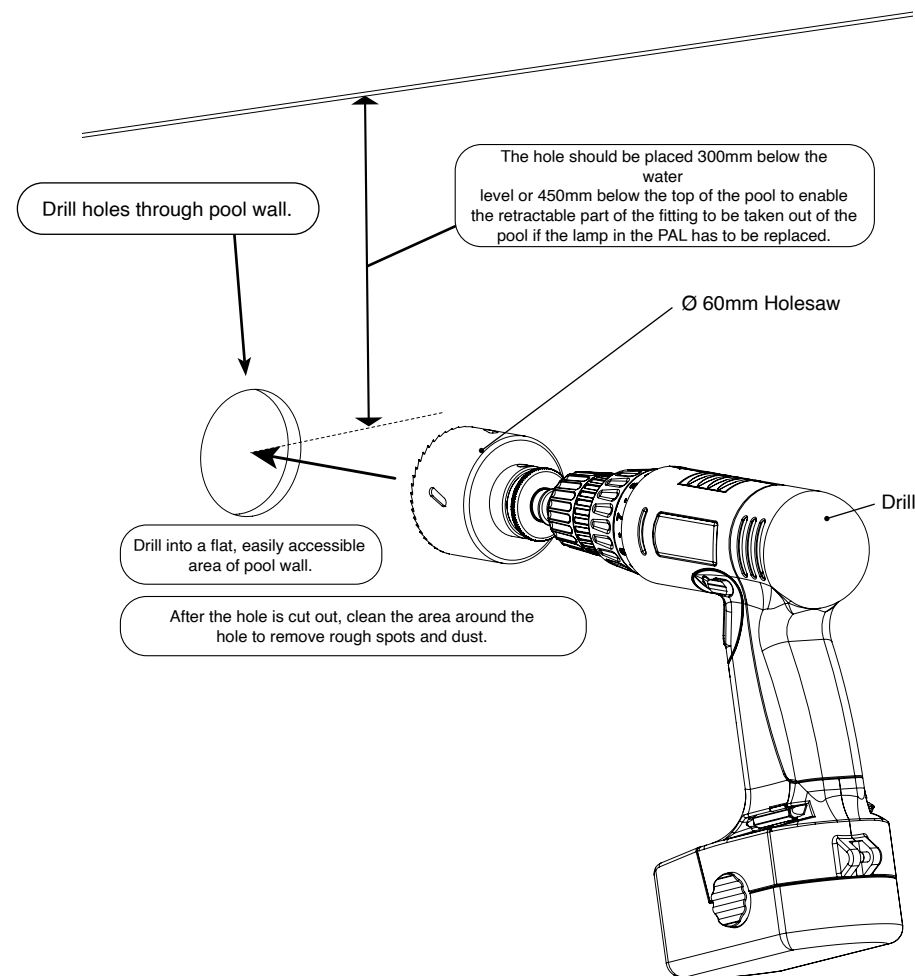
PAL Even Glow light must only be powered by the supplied 12/24V DC PAL Lighting driver.

Do not use another manufacturers power supply or transformer on the even glow lights. Alternate transformers will damage the light and void your product warranty.

Chemically unbalanced pools can cause chemical damage to light housing and stainless steel parts. Please keep pool Ph levels balanced at all times between 7.2 to 7.6. Failure to maintain these Ph levels and subsequent chemical damage will not be covered under PAL Lighting's manufacturer's warranty.

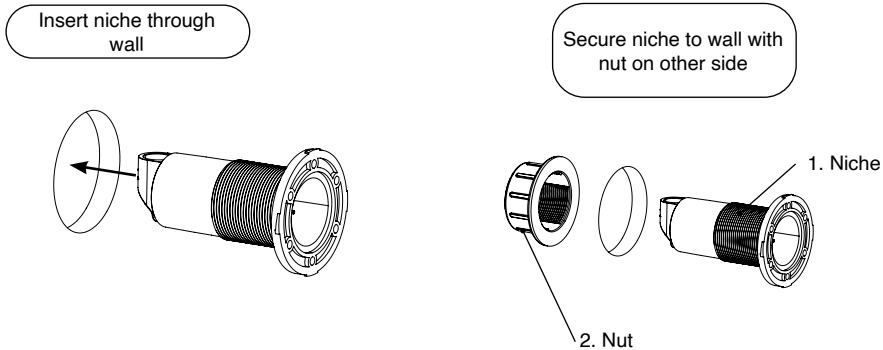
FIBREGLASS INSTALLATION

Drilling hole in fibreglass and vinyl pools

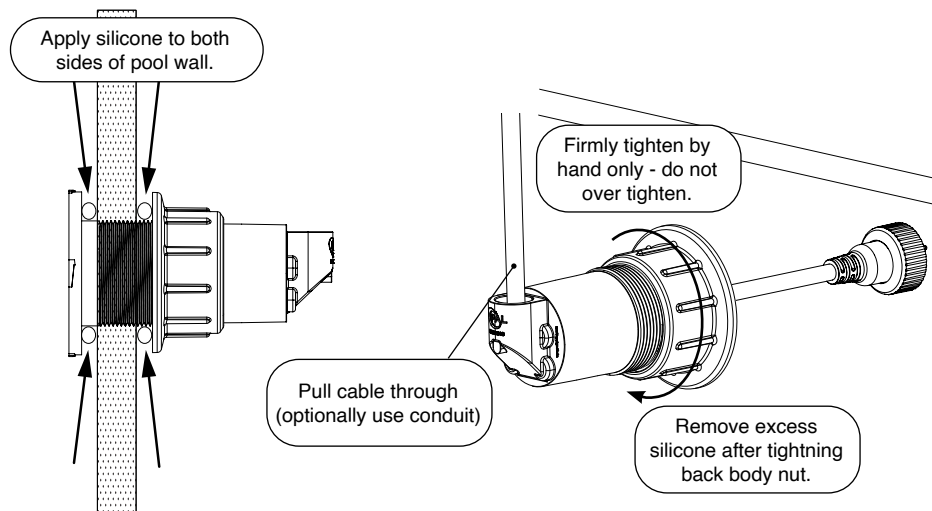


FIBREGLASS INSTALLATION

Installing Fibreglass Light

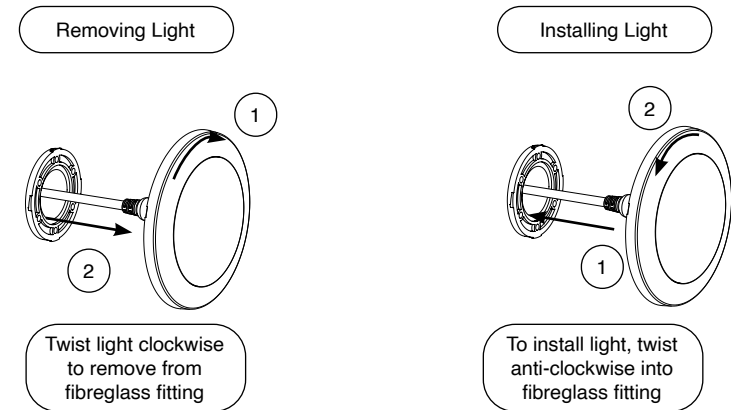


Sealing Light to Pool Shell

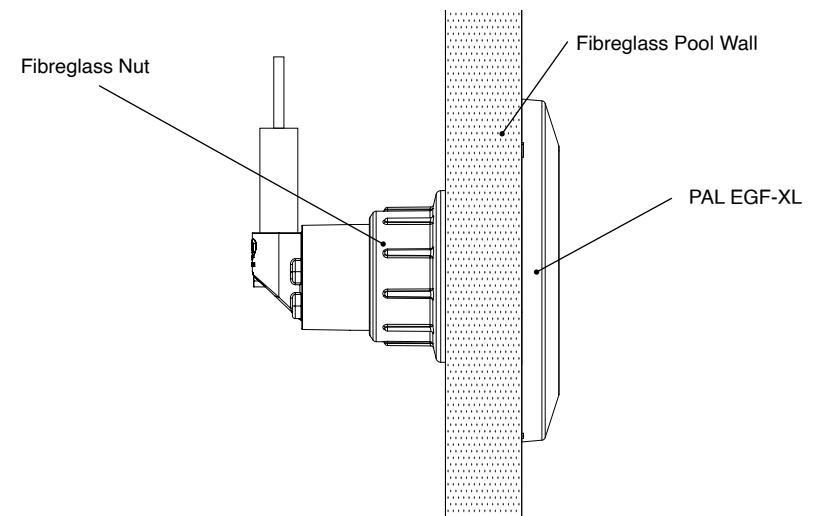


FIBREGLASS INSTALLATION

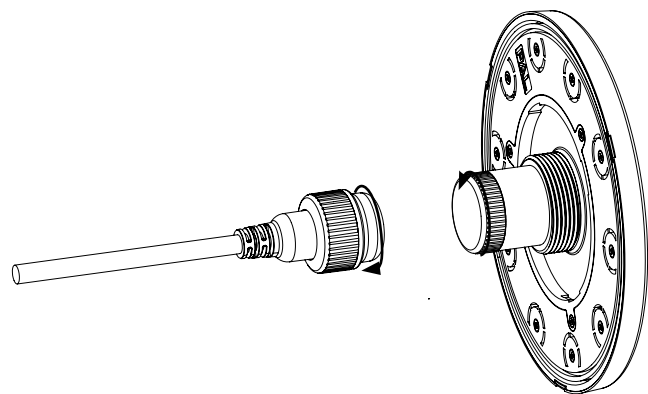
Removing and Installing Light



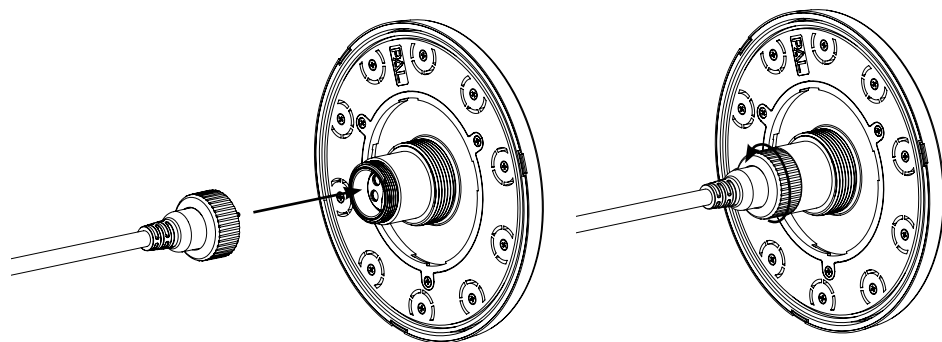
Final Installation



CONNECTING TO LIGHT



Remove protective caps from plug and light socket by unscrewing.



Insert plug into light and secure with screw-on cap.

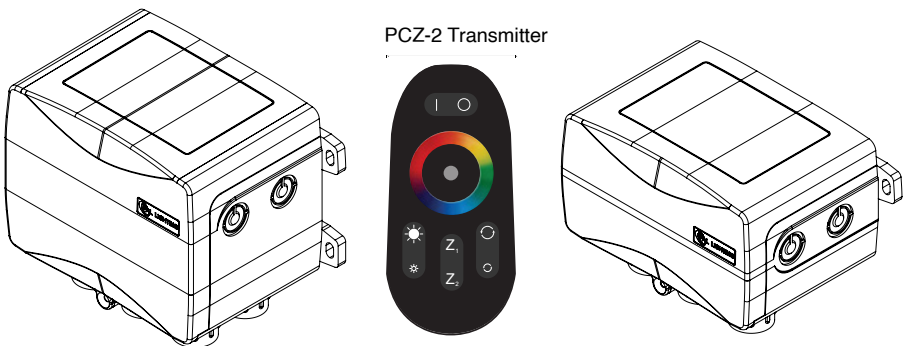
CONNECTING TO DRIVER

PAL COLOR TOUCH DRIVER

The PAL Treo Max is powered by the PAL PCR-1Z / PCR-2Z Class 2 LED Driver
Refer to PCR-1Z or PCR-2Z for Detailed Installation Instructions.

PCR-2Z Driver - up to 5 x lights

PCR-1Z Driver - up to 2 x lights



| DIP 1 | DIP 2 | CLONING DIP SWITCH SETTING |
|-------|-------|----------------------------|
| OFF | ON | JANDY |
| OFF | OFF | PENTAIR |
| ON | OFF | HAYWARD |
| ON | ON | PAL |

- NOTE:
- Must turn off power before making DIP switch selection.
 - When syncing PAL lights to other OEM lights, static colors will match but color change mode timing may vary.
 - If the PAL Lights are to be used with Automation, do not use the handheld remote control and disconnect the Wi-Fi module from the board if so equipped.
 - If the Automation does not turn the PAL lights on or off and there is power to the driver, press the S1 button one time to turn on the PAL Driver.
 - Note that the PAL features of infinite color selection and dimmability are not available while in Cloned mode.

TROUBLESHOOTING

Model: 4 Wire Colour Touch Light

| ISSUE | REASON | ACTION |
|--------------------------|---|--|
| Light not turning on (1) | Faulty Globe. | Replace Globe. |
| Light not turning on (2) | Faulty Driver. | Check Driver output under load using a multimeter. 12volts DC. |
| Light not turning on (3) | Cut Cable. | Check the voltage at light using a multimeter. |
| Light not turning on (4) | Driver not connected to GPO or switched on. | Check Driver is connected to power, check power indicator LED is lit on your Driver. If still no indicator light, send back to PAL for repair. |
| Light not turning on (5) | Faulty LED Driver inside control box. | Push the test button inside control box, if lights still doesn't turn on then send product back to PAL. |
| Lights out of sync (1) | Light incorrectly wired to control box. | Check colour wire sequences connecting to control box. |
| Lights out of sync (2) | Lights incorrectly wired to LED lamp. | Check colour sequences to LED lamp terminal block inside the light. |

TERMS AND CONDITIONS

PAL PRODUCT WARRANTY DETAILS

The PAL product is guaranteed against defects in materials and/or workmanship, under normal domestic use for (12) twelve months.

Except as otherwise provided for by law, this guarantee becomes invalid if in the opinion of the Company the product has been misused, abused, damaged in transit, incorrectly installed, or connected to an electrical supply not corresponding with the products specification or a non-approved PAL power supply.

The Company is not responsible for forwarding freight charges or losses in transit.

If any part of the product proves to be defective within the warranty period, the defective part will be repaired or replaced, free of charge and at the discretion of PAL Lighting.

PAL Lighting shall not be liable for any loss of profits or any consequential, indirect or special loss, damage or injury of any kind whatsoever arising directly or indirectly from PAL Lighting products. This limitation does not apply to any liability under the Australian or New Zealand consumer legislation.

PLEASE REGISTER YOUR PRODUCT WARRANTY DETAILS ONLINE AT:

pallighting.com/product-registration OR You MUST retain some proof of purchase to provide evidence of the DATE of the original purchase.